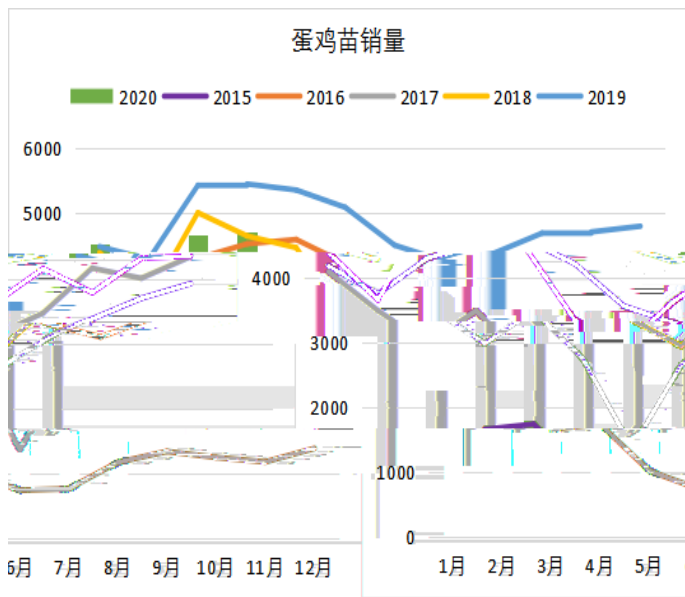
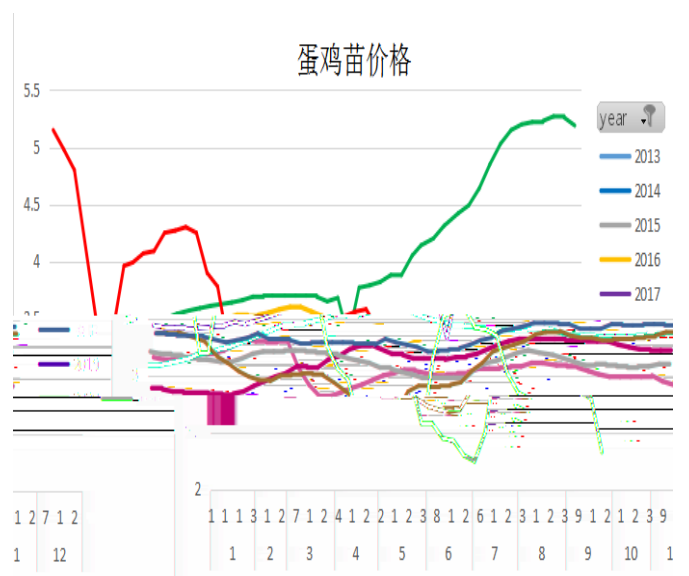


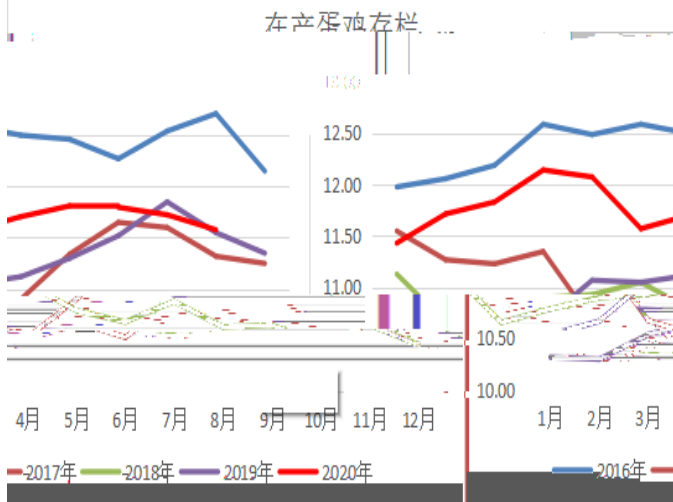
1.



2.

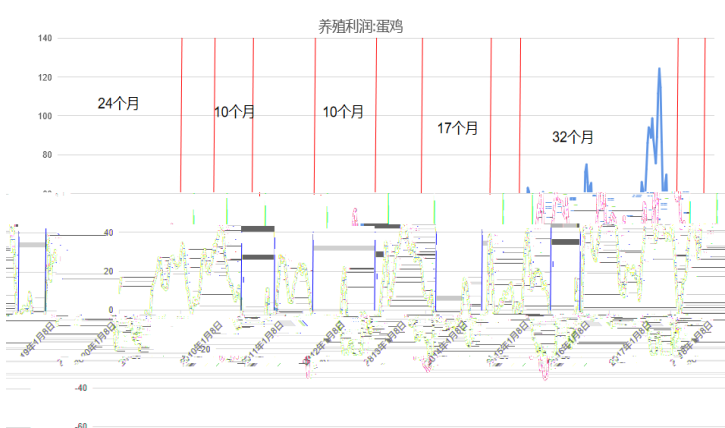
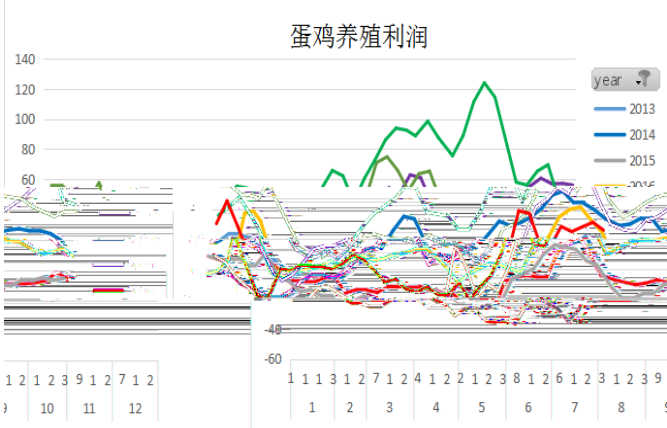


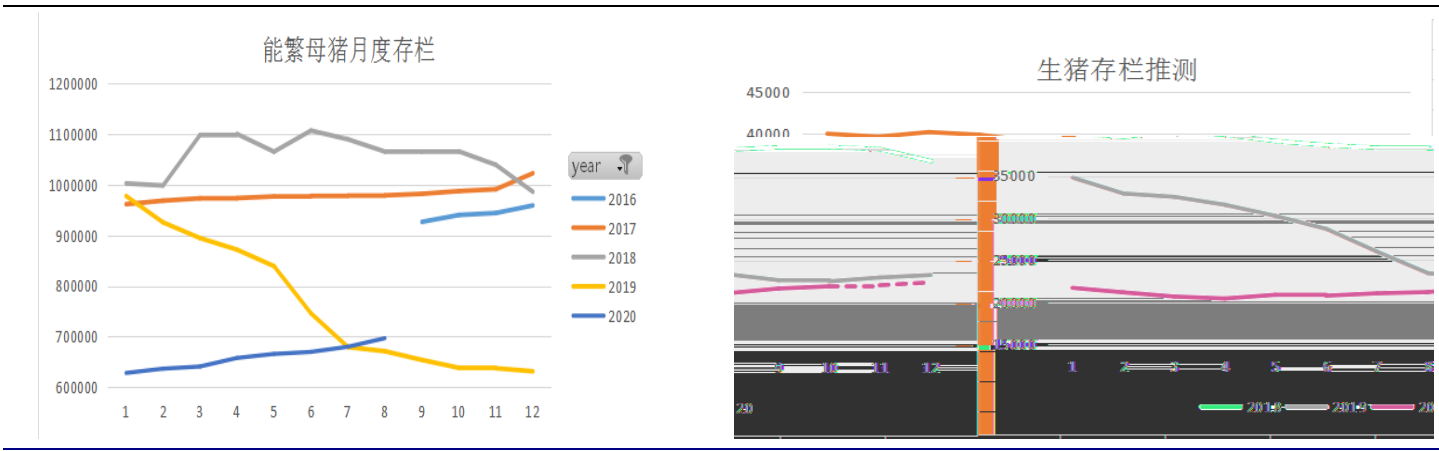
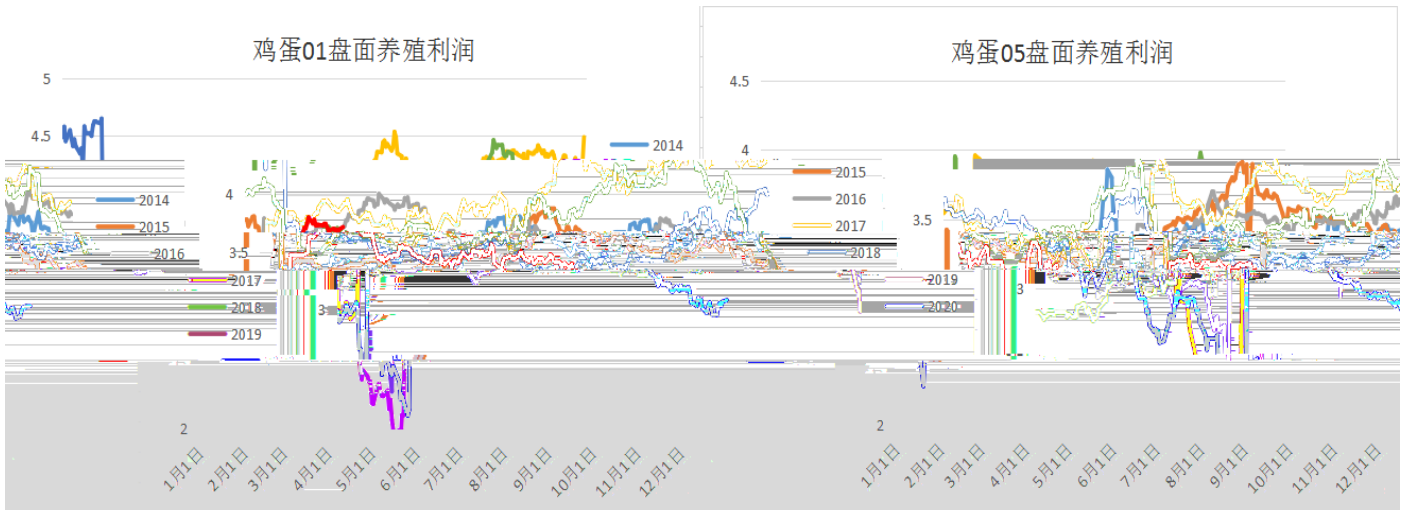
3



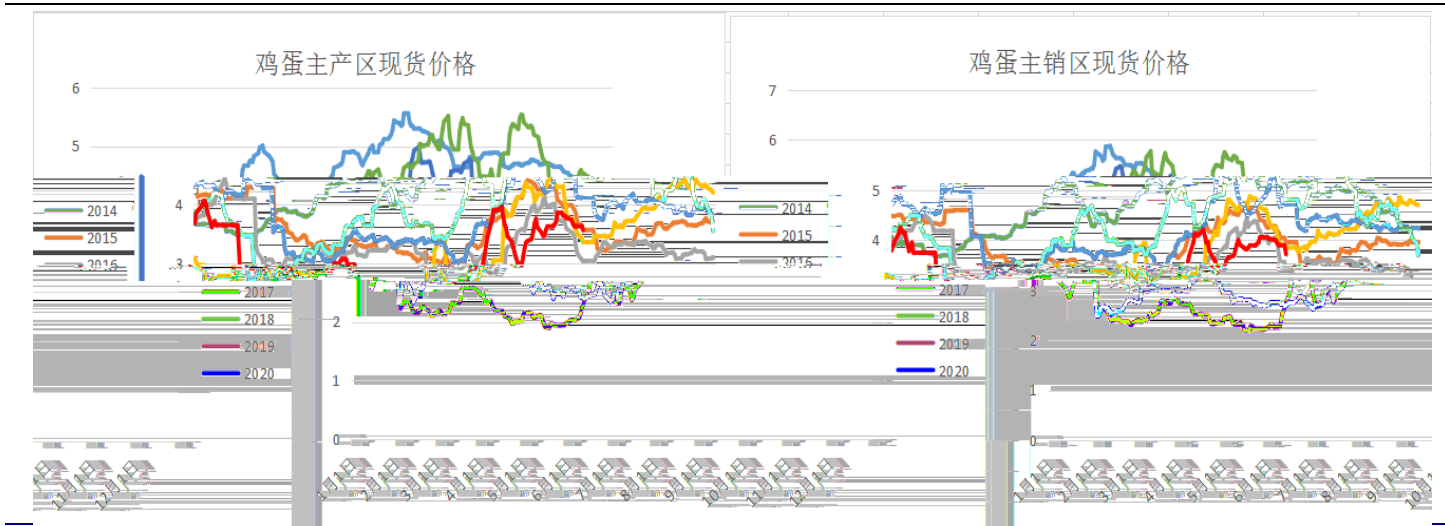
	2016年	2017年	2018年	2019年	2020年	同比2019...	同比2018	同比2017
1月	11.30	11.60	11.15	11.02	11.10	13.75%	2.12%	-1.96%
2月	12.06	11.27	10.66	10.30	11.72	13.75%	9.91%	3.36%
3月	12.19	11.23	10.79	10.54	11.83	12.26%	9.66%	5.00%
4月	12.59	11.35	10.90	10.67	12.14	13.82%	11.42%	7.08%
5月	12.49	10.68	10.93	11.07	12.08	9.09%	10.49%	13.01%
6月	12.50	10.52	11.05	11.05	11.57	4.70%	4.70%	9.48%
7月	12.50	10.90	10.79	11.12	11.71	5.26%	5.26%	8.59%
8月	12.46	11.34	10.68	11.30	11.81	4.52%	4.52%	10.43%
9月	12.27	11.65	10.88	11.52	11.80	2.40%	2.40%	8.29%
10月	12.54	11.60	10.63	11.85	11.72	-1.06%	-1.06%	10.71%
11月	12.71	11.32	10.65	11.55	11.58	0.24%	0.24%	8.71%
12月	12.15	11.25	10.46	11.35				

4

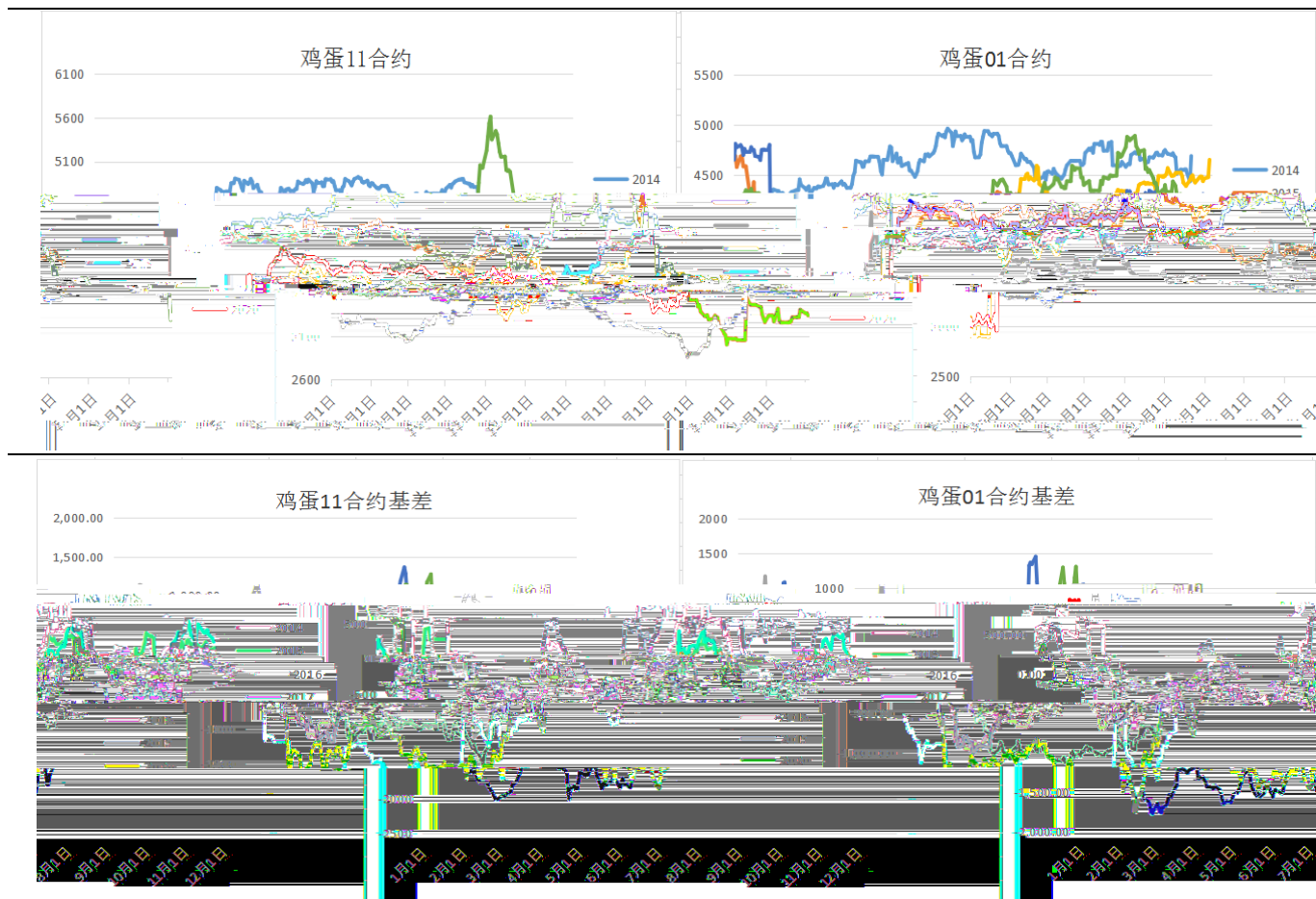


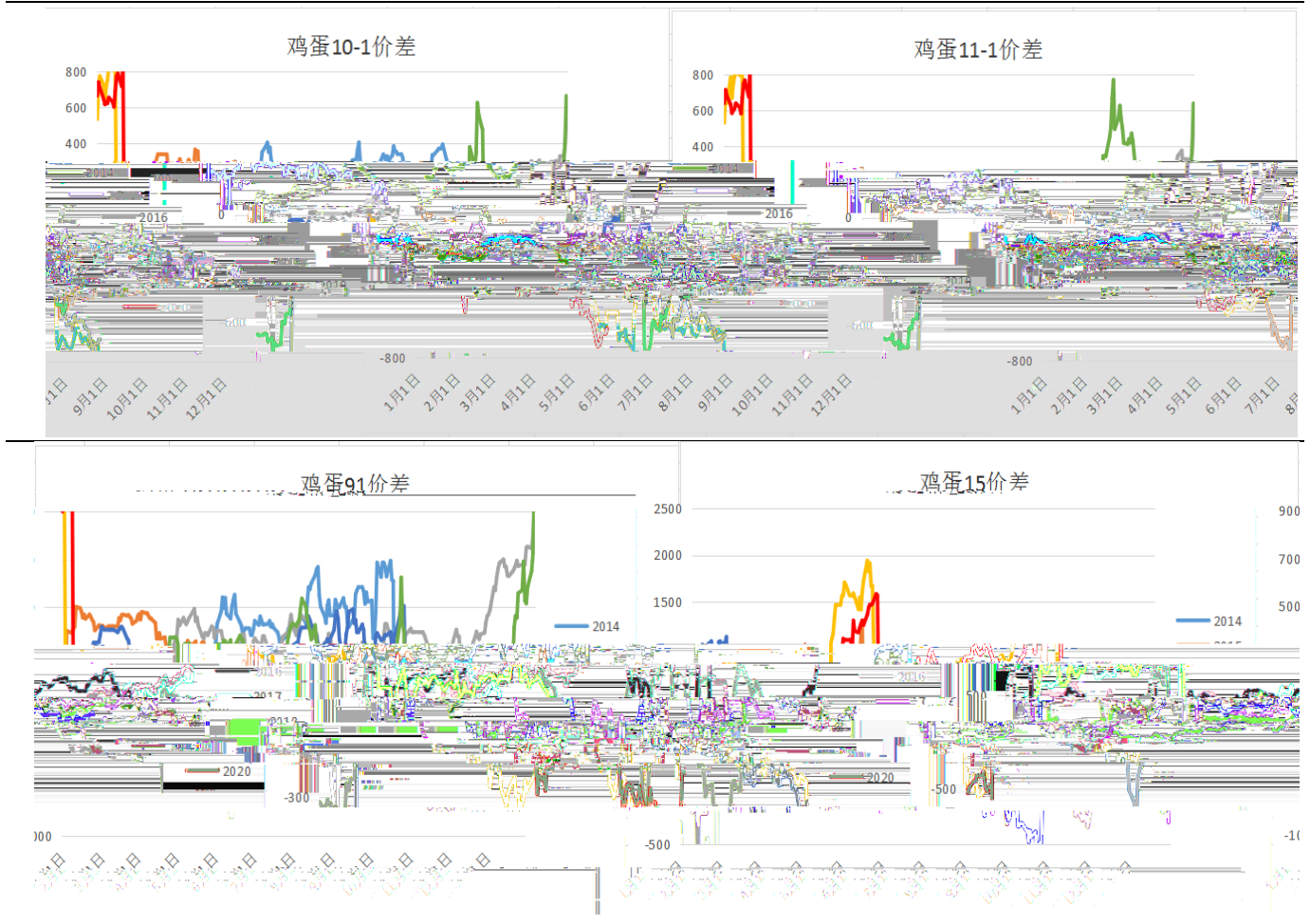


6



7





1.

2.

3.

4.