

F3070864
Z0015179

12

12

31

F3074588

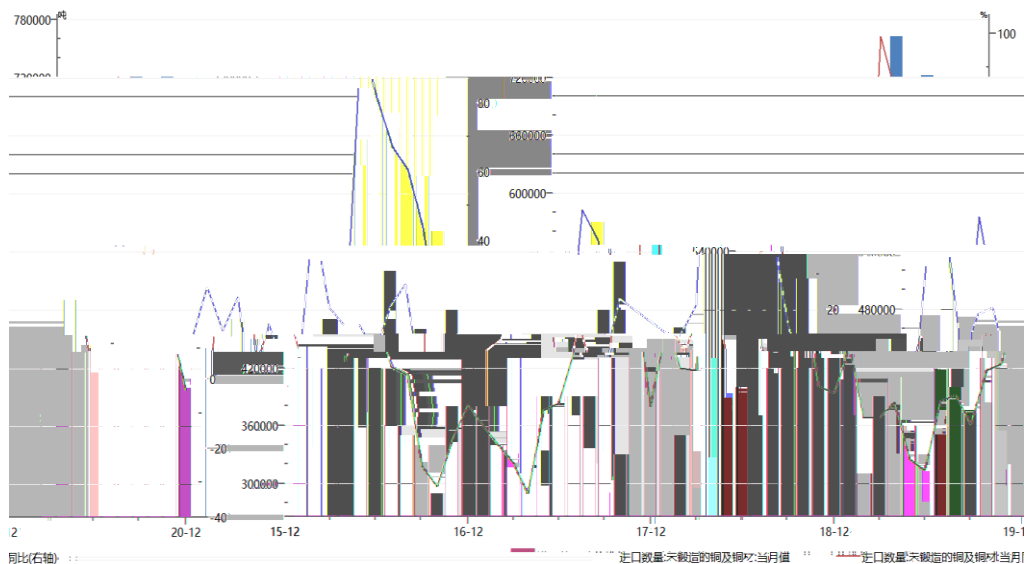
F3076375



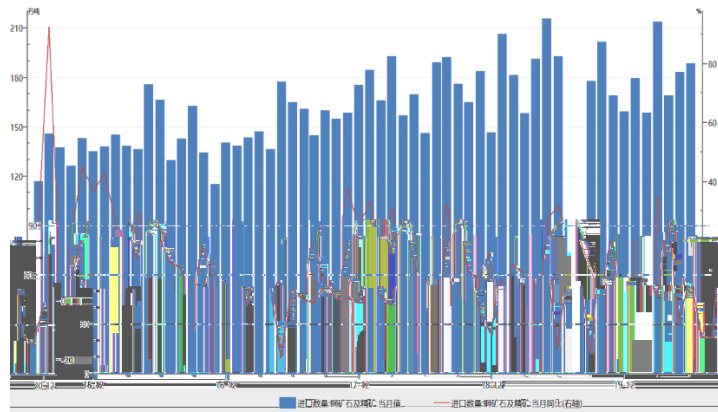
				12		51.2
8.73%		3.33%	2020			668
2019	498		34.13%			
2020		6-10				

LME

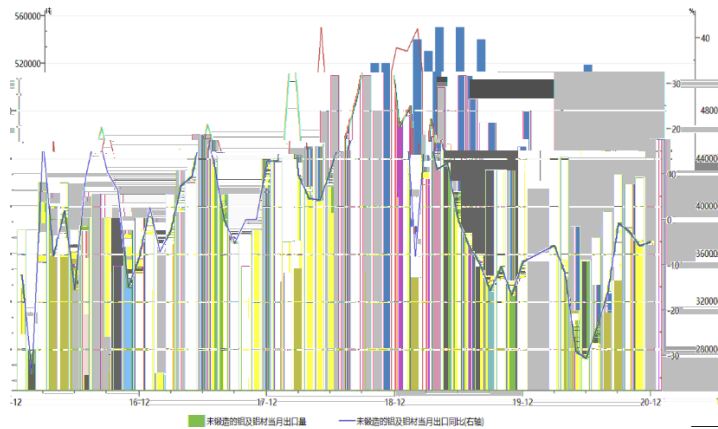
				12		
12						
	1		SMM	1	12	31
30						
	1					



			12	188.5	2.95%
2.25%	1-12	2176.5		19	1.02%
		21			
			12		19
		2			



			12	456130.4	
11		31105	4.97%	2020	485
		8%			
	12				
	2020		2018	2019	2021
		2			



1.

2.

3.