



金信期货

F3070864

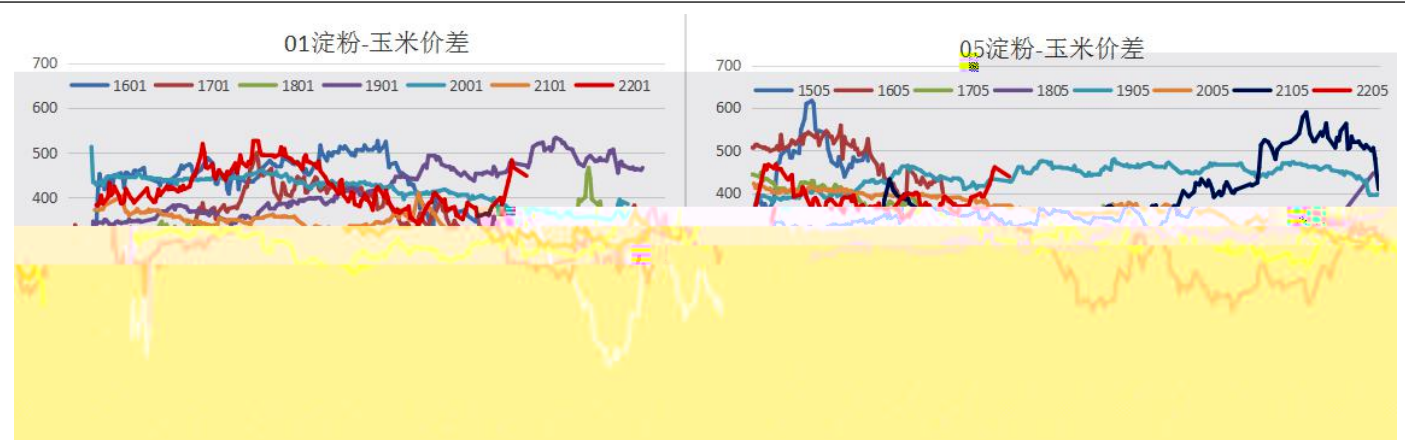
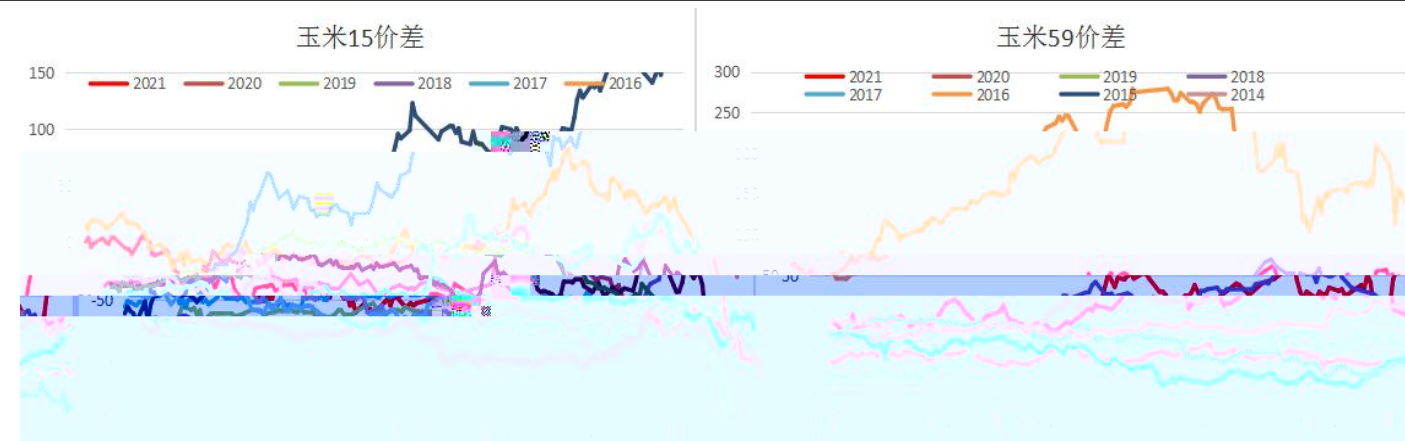
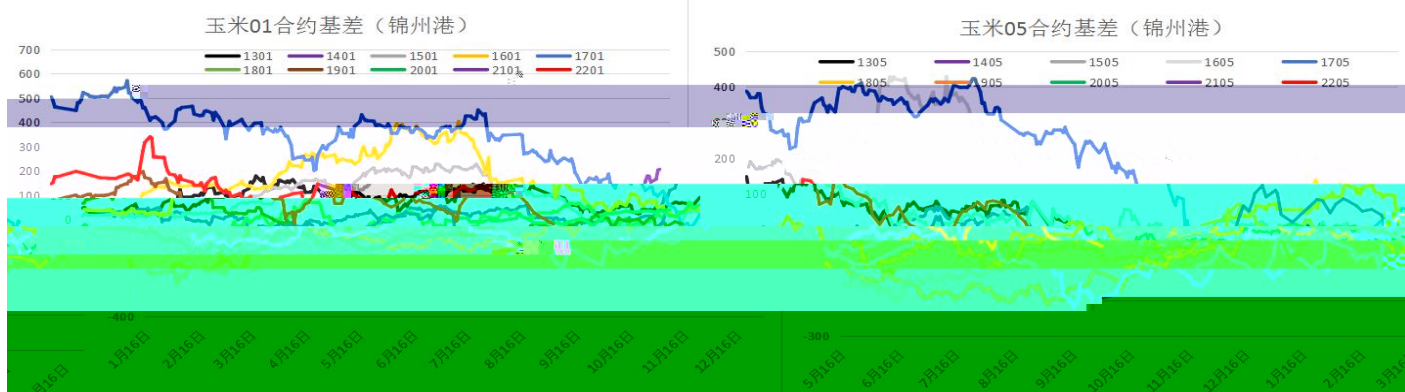
Z0015179

F3076601

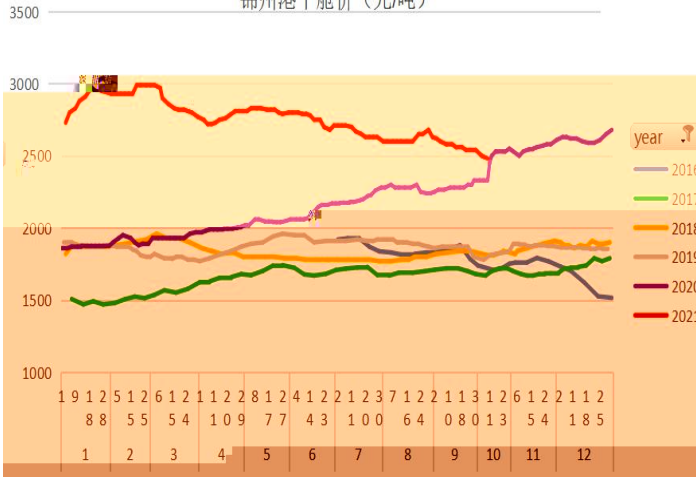
songcongzhi@jinxinqh.com



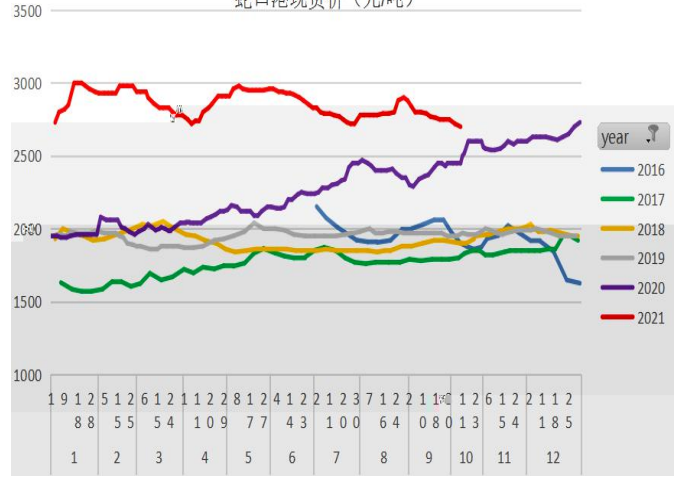
请务必仔细阅读正文之后的声明



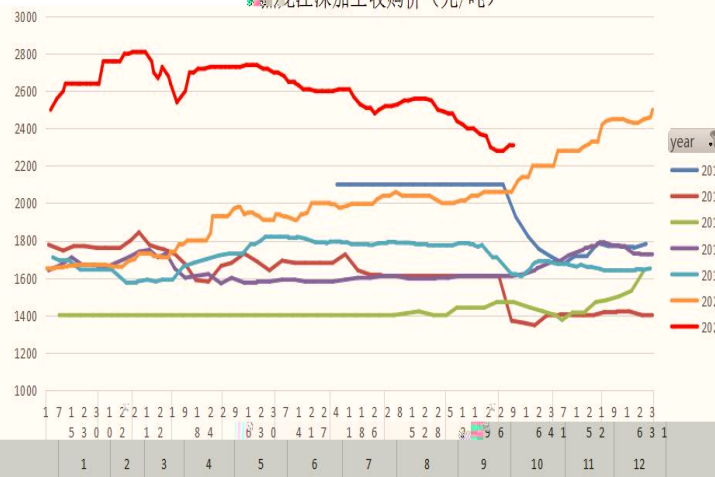
锦州港平仓价 (元/吨)



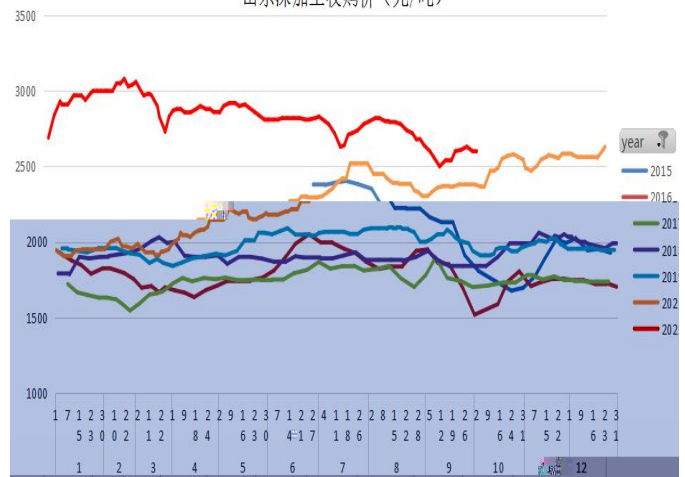
蛇口港现货价 (元/吨)



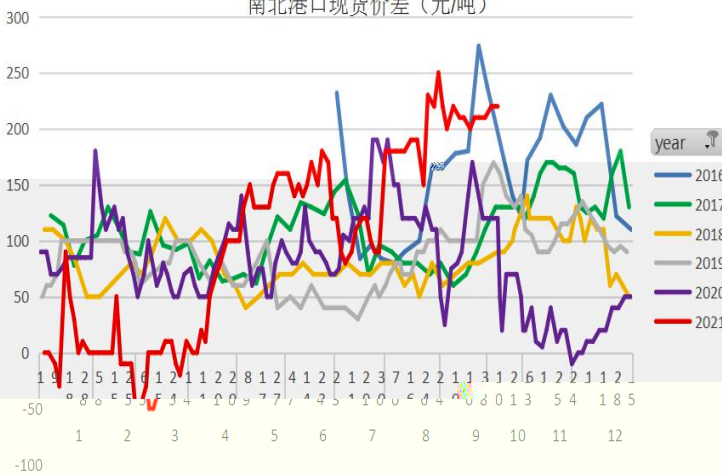
黑龙江深加工收购价 (元/吨)



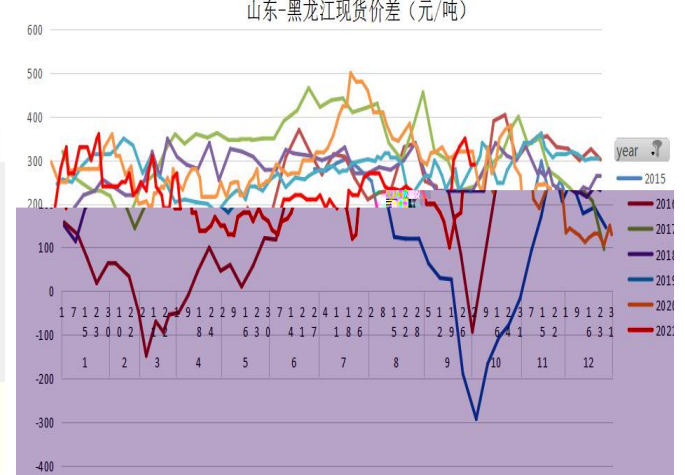
山东深加工收购价 (元/吨)

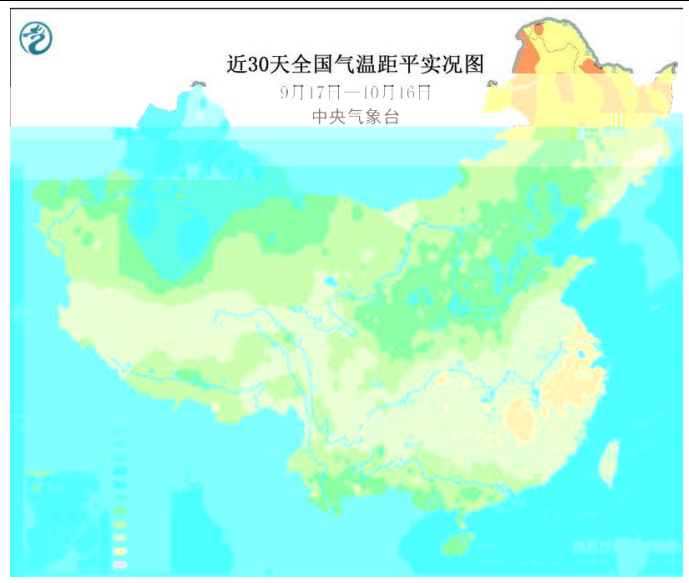
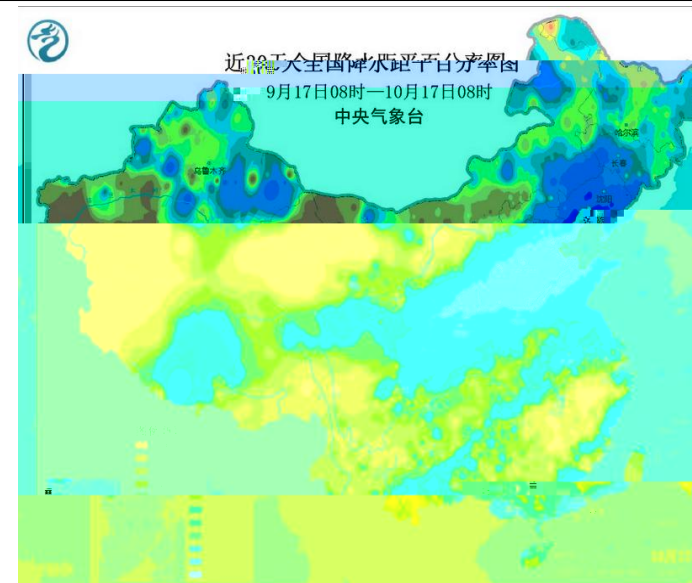
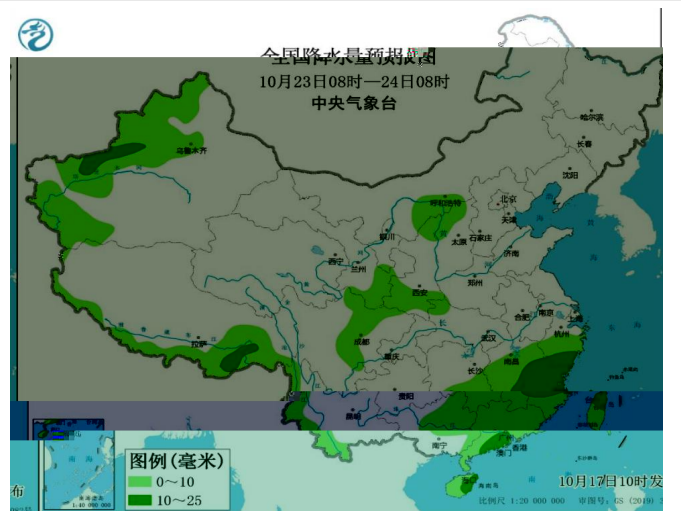
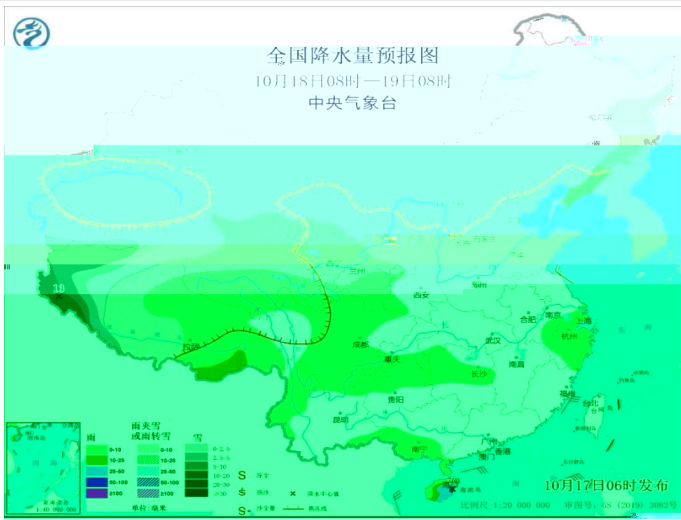


南北港口现货价差 (元/吨)



山东-黑龙江现货价差 (元/吨)

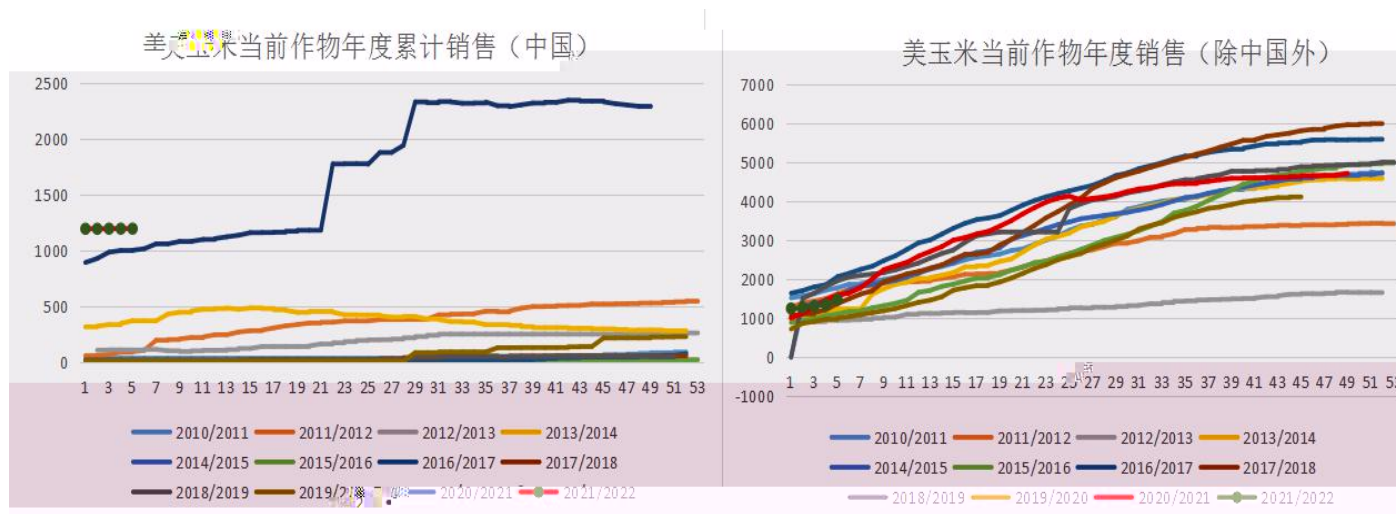
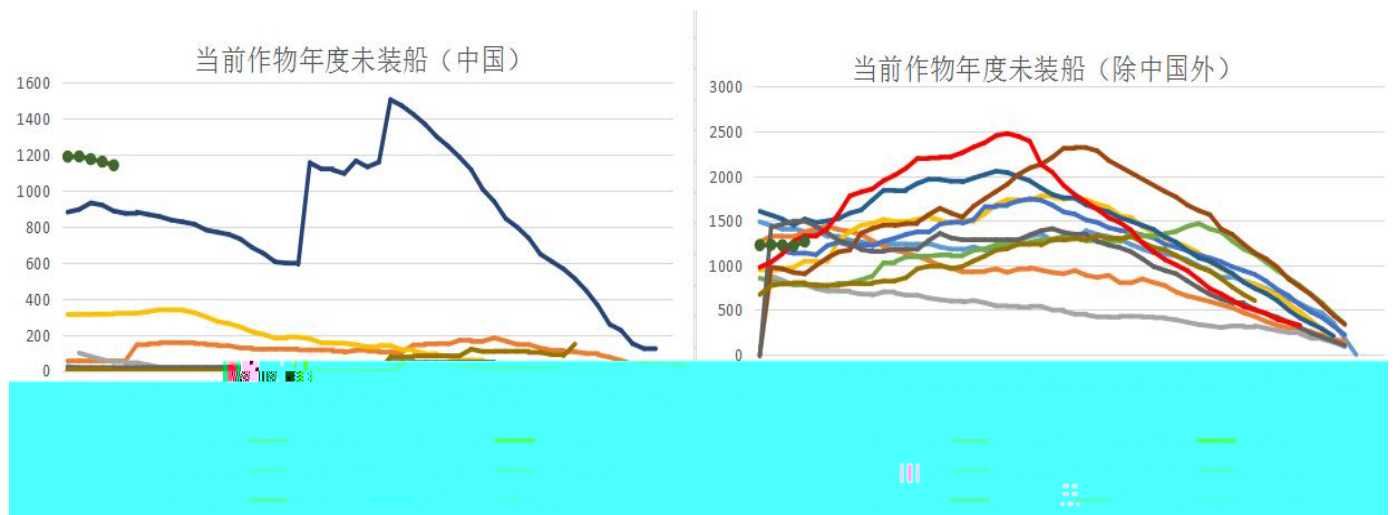
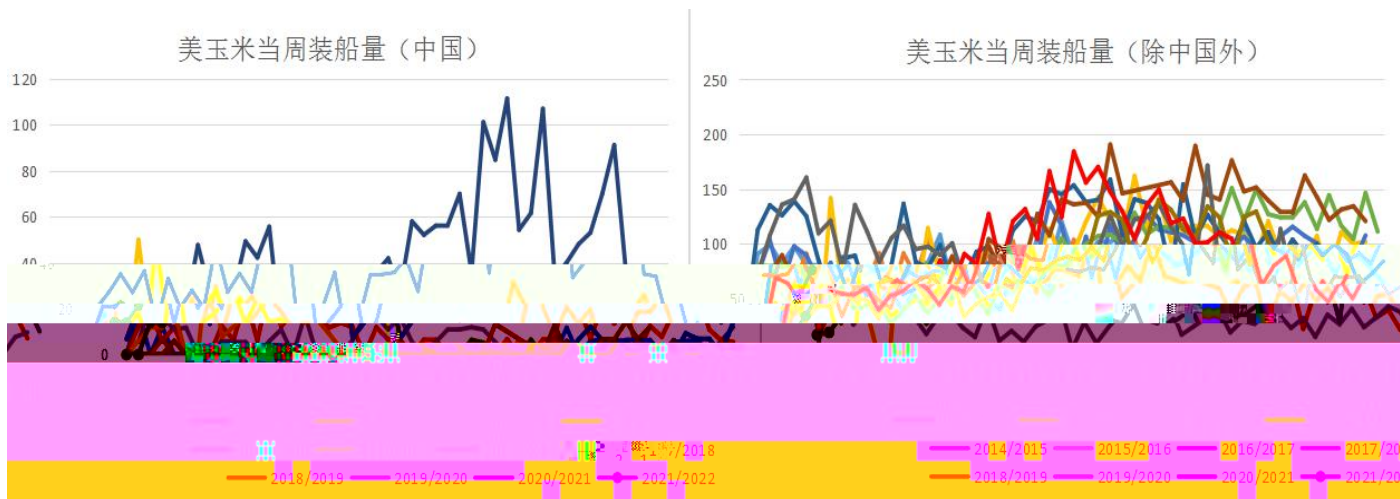






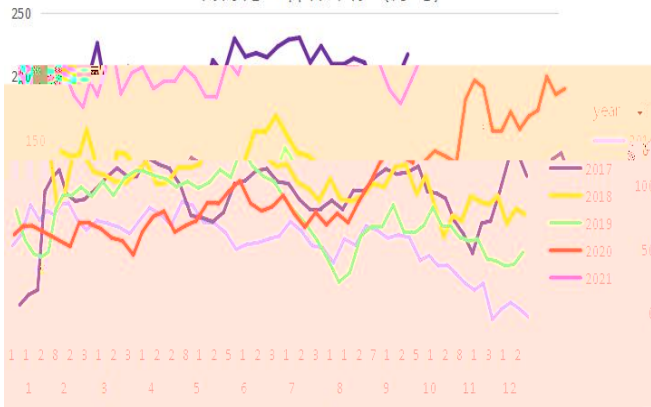




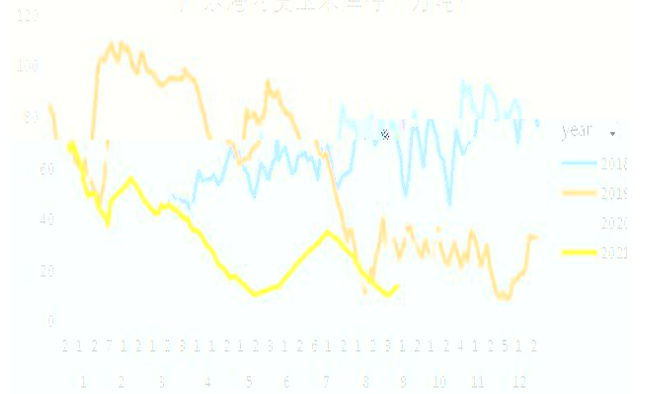




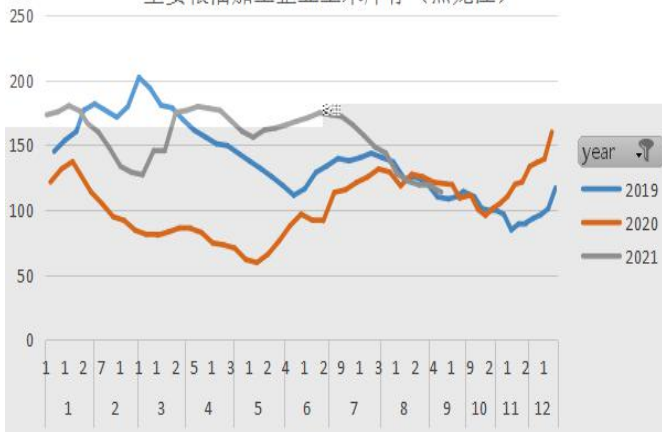
南方港口谷物库存 (万吨)



广东港口玉米库存 (万吨)



主要粮油加工企业玉米库存 (黑龙江)



主要粮油加工企业玉米库存 (山东)

