



金信期货

GOLDTRUST FUTURES

2022 01 10

1

1

MTO

F3070864

Z0015179

F3074960

[tangjianlin@jinxingh.com](mailto:tangjianlin@jinxingh.com)



MTO

2205

2644

2513

156 6.30%

1935 /

0.82%

2433 /

1.04%

2586 /

1.27%

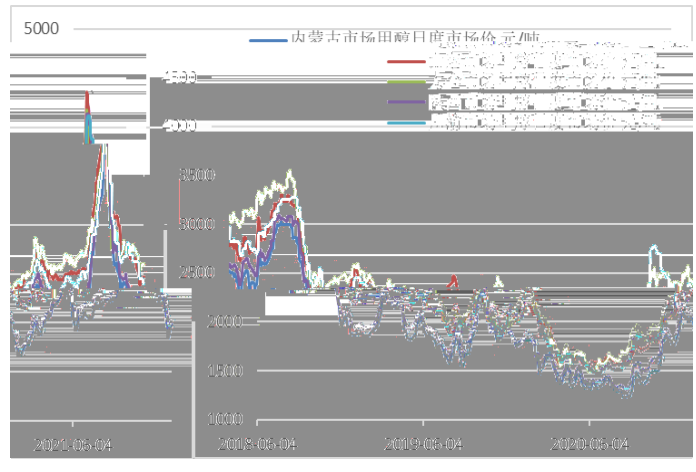
307 -2 /

402.5 -2.5

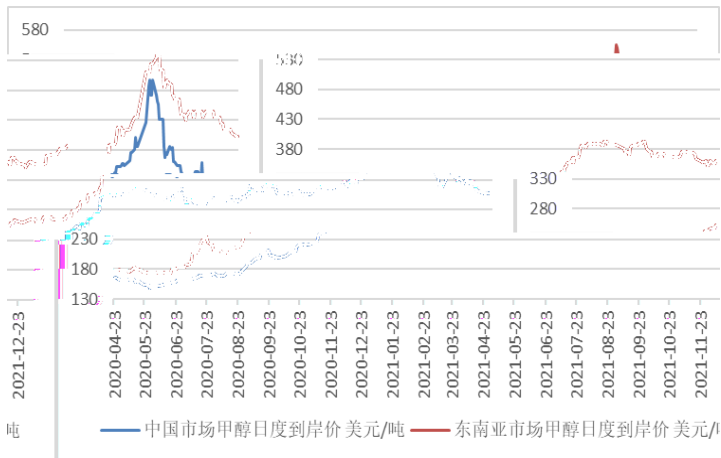
330-340

1

2



3



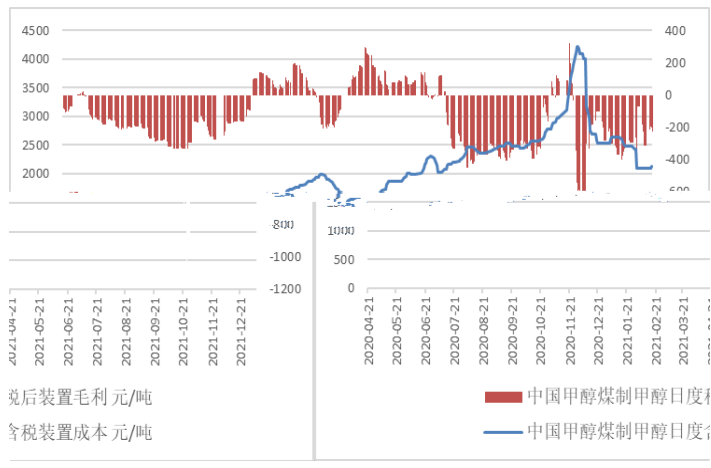
1

1 7

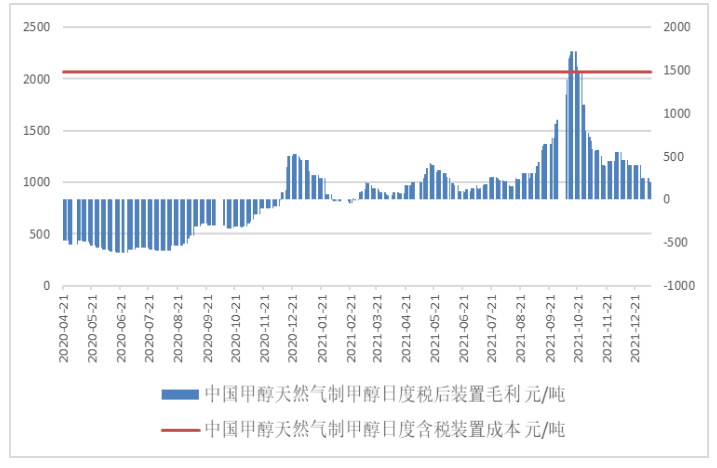
2130 +40 /

2070 0 / 195 -45 /

3



4



2

13.2 +2.4

7.8 -0.7

1 7

1 6

41.05 +0.75

12.1 +0.75

2235-3878

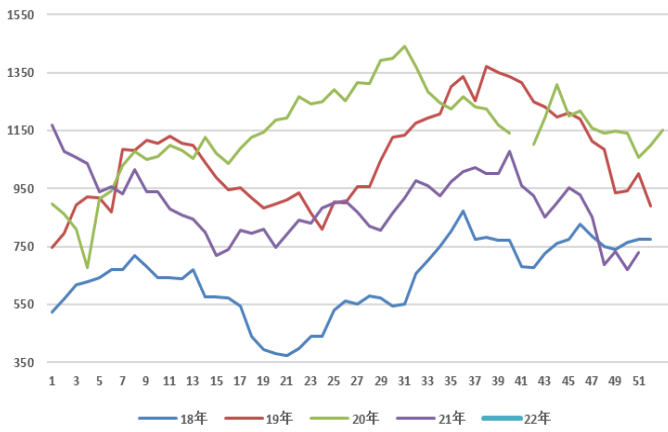
2800-3478-3471

7.62

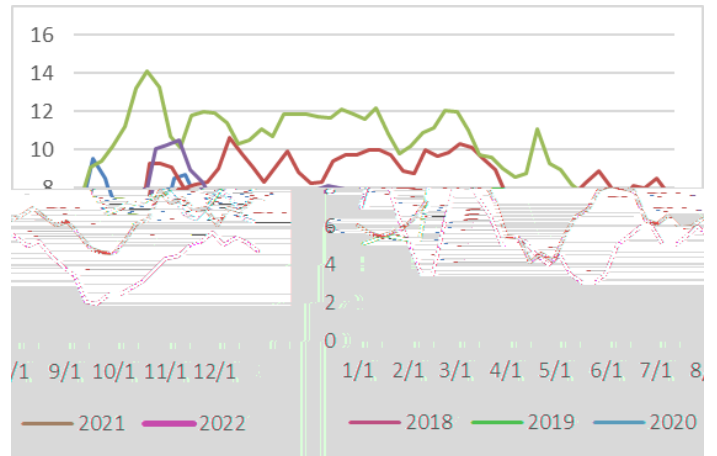
0.14

MTO

5



6



3

1 7

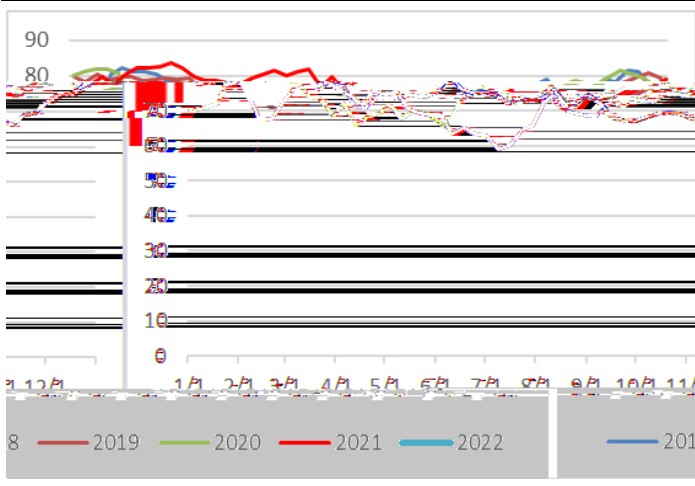
79.36 +0.32 %

28.63 -0.08 %

38.55

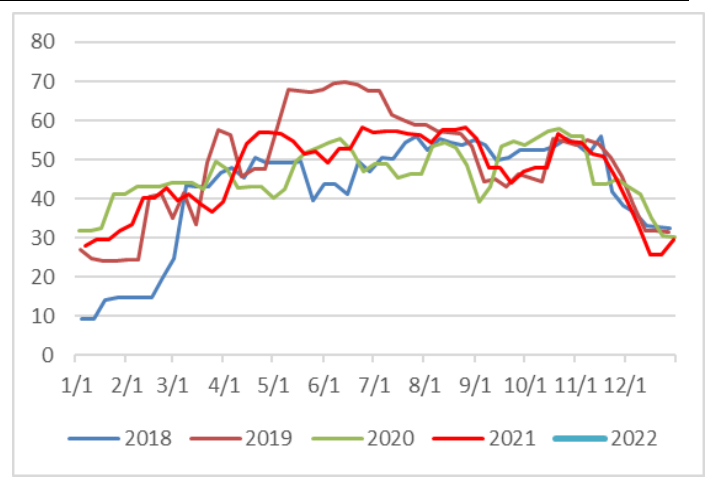
7

%



8

%



4

1 7

77.21 +3.47 %

27.06 +7.84 %

MTBE

49.36 -2.82 %

86.98 +3.87 %

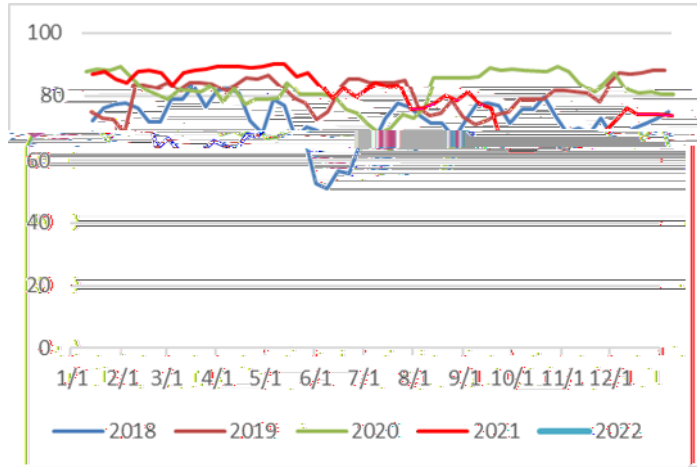
16.07 -0.09 %

DMF

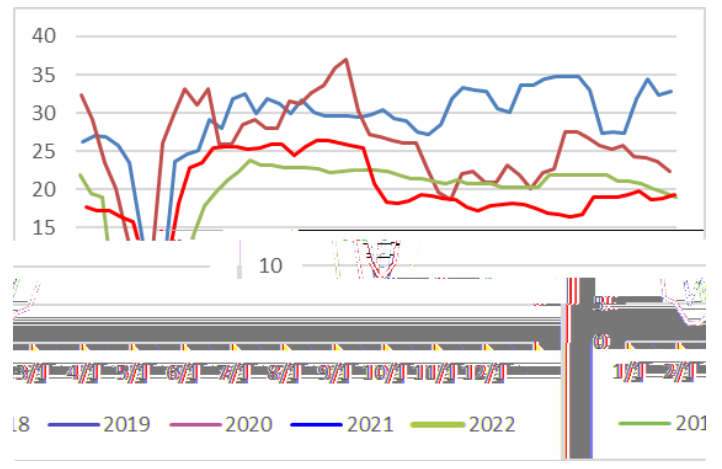
73.21 -1.89 %

MTO

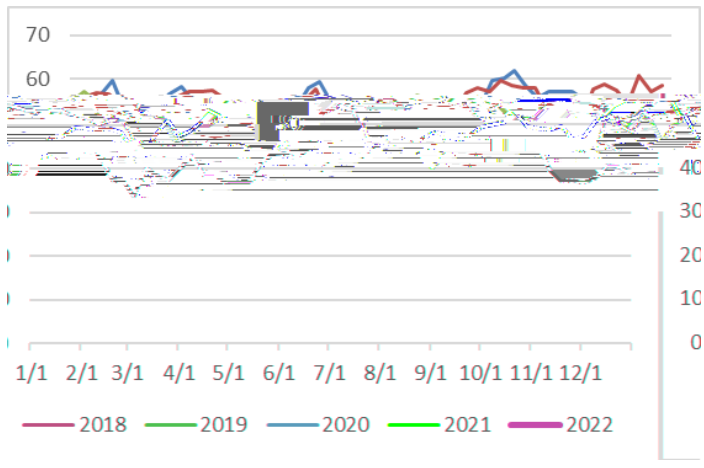
9



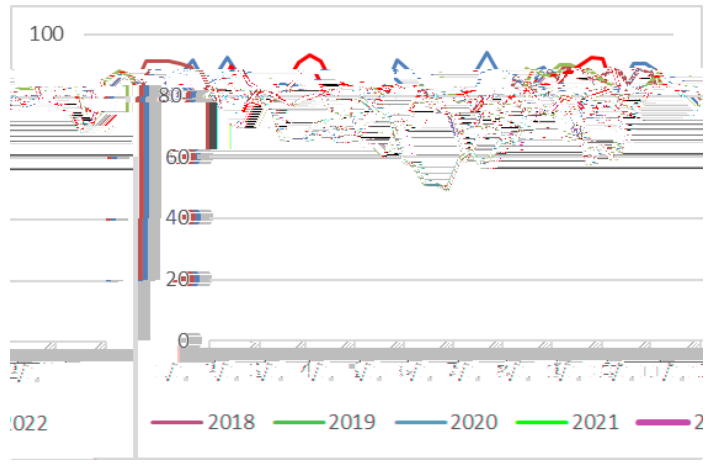
10



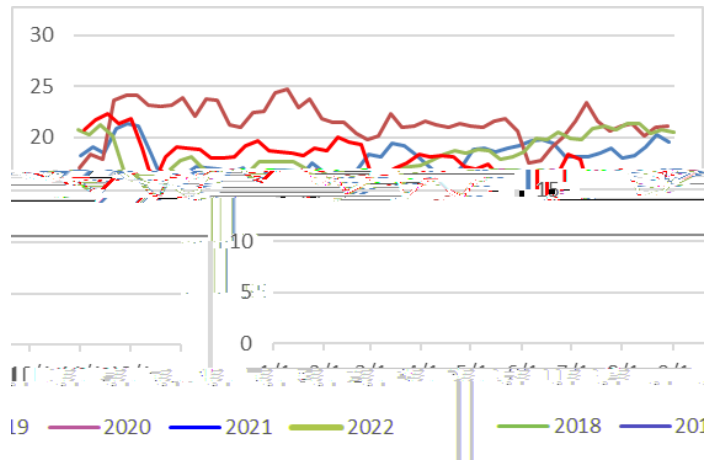
11 MBE



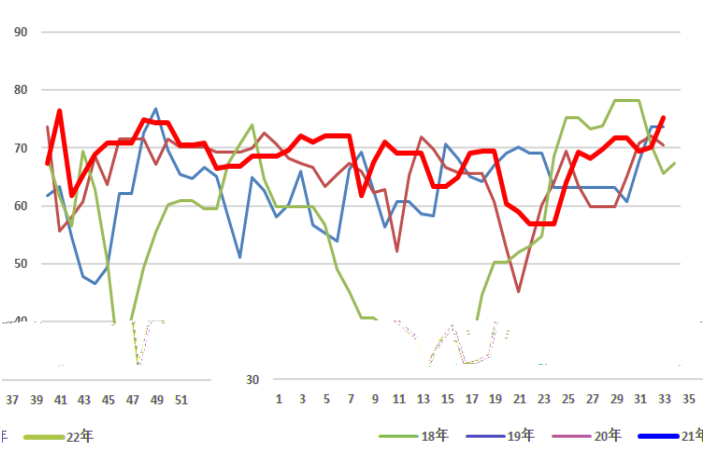
12



13



14 DMF



5

1

	120		9 18	1.5
	60			0.84
	100			1.38
	30		10 24	0.7
	10			0.18
	50			0.24
	85		11 29	1.54
	87		12 6 35	0.8
				7.5

2

	Bioethanol		2#95	
	MHTL		5#403	
	Methanex		2#265	85
	Zagros PC		2#330	
	Majan Pc		165	20
	Kaveh	Dayyer	230	
	Kimiya Pars		165	20

МО

“ ”

“ ”