

Experts of financial derivatives pricing

衍生品定价专家

优财研究院

投资咨询业务资格

湘证监机构字[2017]1号

• F3073320

• Z0015370

yaoxi nghang@j i nxi ngh. com



10bp " + MLF OMO +PPI

"

"

10bp

+

"

" "

" "

+

请务必仔细阅读正文之后的声明

%

4

.4%



2

指标	同比	21-12	21-11	21-10	21-09	21-08	21-07	21-06	21-05	21-04	21-03	21-02
工业增加值	当月同比% (两年平均)	5.8	5.4	5.2	5.0	5.4	5.6	6.5	6.6	6.8	6.2	8.1
固定资产投资		3.9	3.6	3.3	2.7	4.3	2.3	5.7	4.7	5.7	4.0	1.7
基建		-0.3	-0.1	0.9	-1.8	-1.7	-1.7	2.6	2.8	2.4	5.6	-2.4
房地产		-3.0	3.0	3.3	4.0	5.9	6.4	7.2	9.0	10.3	7.7	7.6
制造业		11.0	11.2	6.9	6.4	6.1	2.8	6.0	3.7	3.4	-0.3	-3.0
社消零售		3.1	4.4	4.6	3.8	1.5	3.6	4.9	4.5	4.3	6.3	3.1
出口金额		19.5	21.3	18.7	18.4	17.0	12.9	15.1	11.1	16.7	10.2	23.0
进口金额		13.4	17.3	12.4	15.5	14.4	12.8	18.8	12.5	10.8	17.0	12.9
CPI	当月同比%	1.5	2.3	1.5	0.7	0.8	1.0	1.1	1.3	0.9	0.4	-0.2
PPI	当月同比%	10.3	12.9	13.5	10.7	9.5	9.0	8.8	9.0	6.8	4.4	1.7
M1	%	3.5	3.0	2.8	3.7	4.2	4.9	5.5	6.1	6.2	7.1	7.4
M2	%	9.0	8.5	8.7	8.3	8.2	8.3	8.6	8.3	8.1	9.4	10.1
社融	存量同比%	10.30	10.10	10.00	10.00	10.30	10.70	11.00	11.00	11.70	12.30	13.30
失业率	城镇调查	5.1	5.0	4.9	4.9	5.1	5.1	5.0	5.0	5.1	5.3	5.5

Wind

1.

1.

1 2

2.8%

2.

+

+PPI

PPI

3.

2

1

1

"

"

3 4

17

5000

MLF

1

4.

10bp

5bp

10bp

"

"

"

"

"

"

5.

"

"

MLF

"

"

+

+

+

2.

9

+

" " " "

1.

"

"

"

"

12

-13.9%

-3%

9.6

6

12

-17.8%

-1.1%

1.5 0.7

"

"

"

"

"

"

"

"

"

"

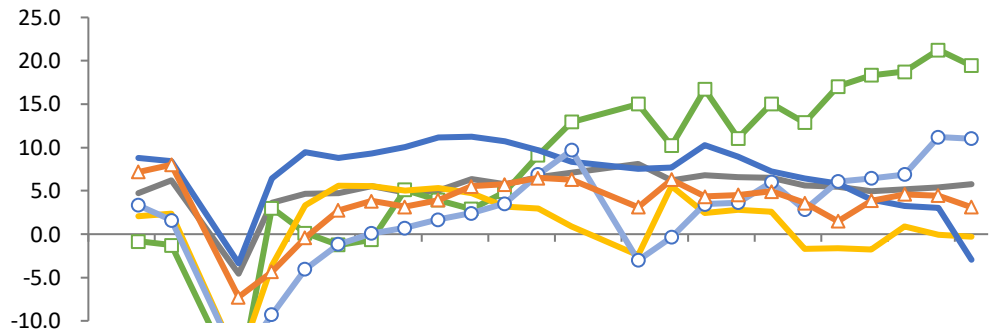
"

"



+

3 %



Wind

4

%

5

%

Wind

Wind

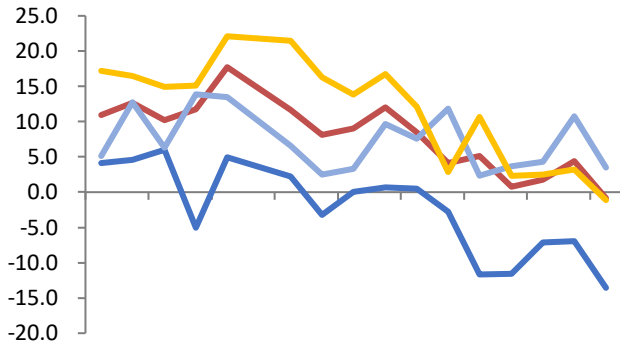


6

%

7

%



Wind

Wind

8

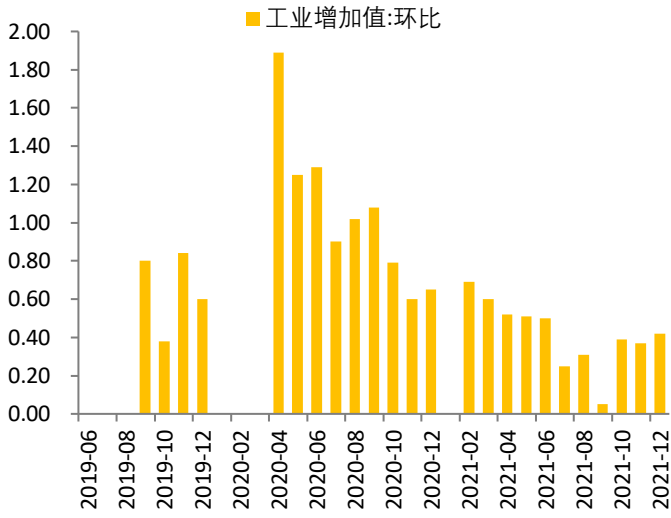
%

Wind



9

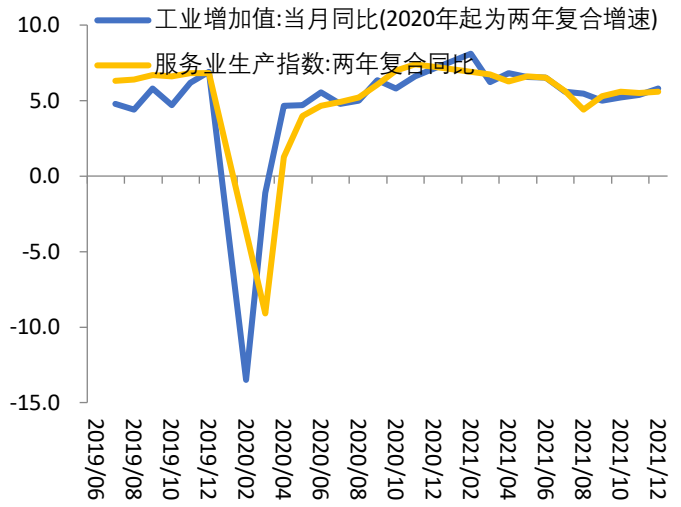
%



Wind

10

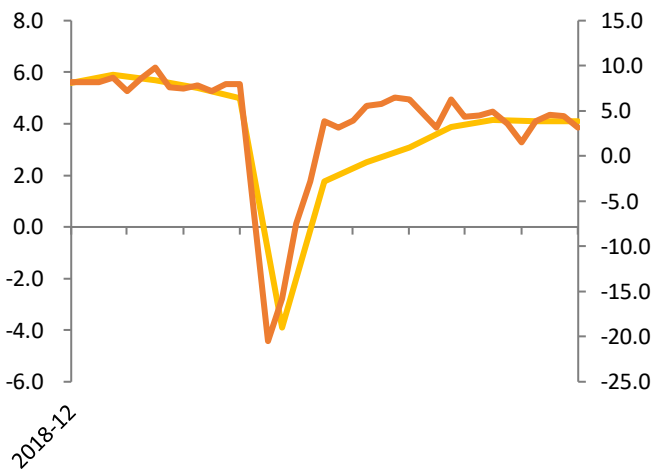
%



Wind

11

%



Wind

12

%

Wind



“ ”

“ ”

16

400-0988-278

<https://www.jinxinqh.com/>