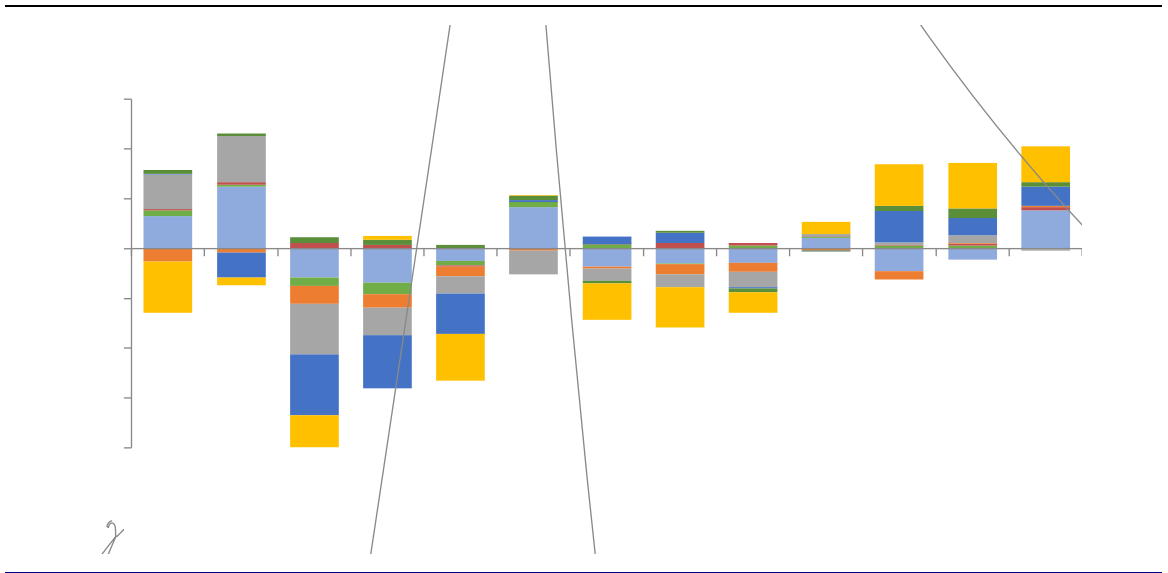
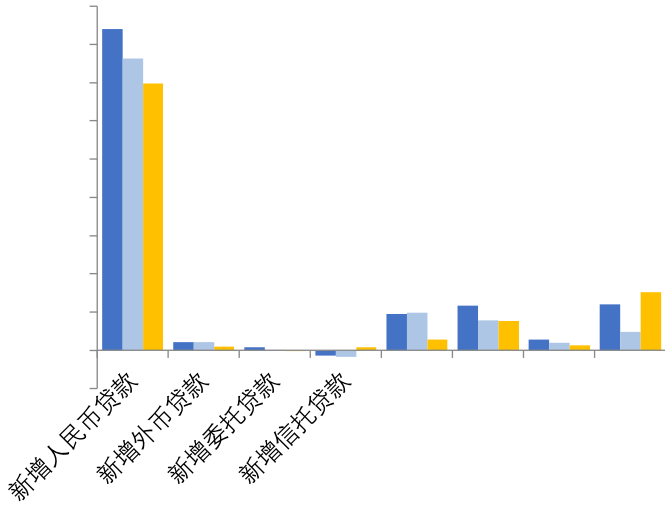


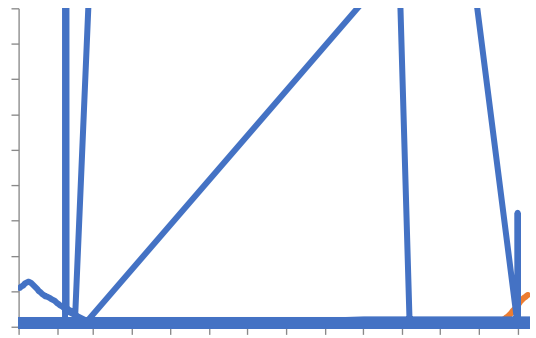
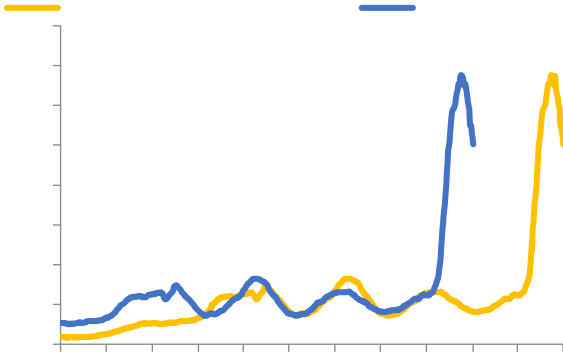


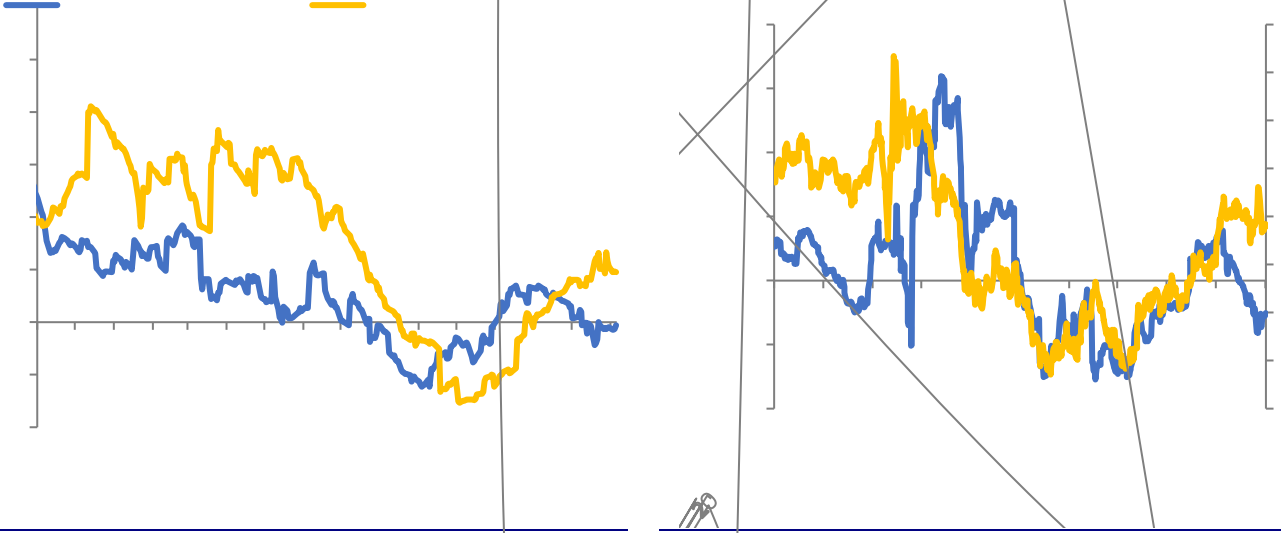


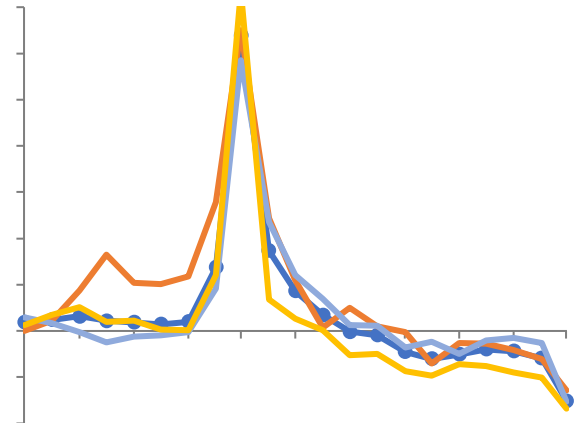
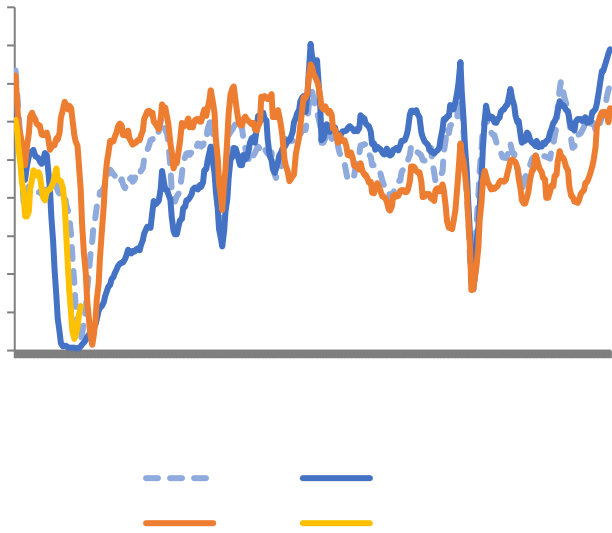
	22-01	21-12	21-11	21-10	21-09	21-08	21-07	21-06	21-05	21-04
当月新增社融	61700	23682	25983	16176	29026	29893	10752	37017	19522	18570
新增人民币贷款	20800	11300	12700	8262	16600	19300	10800	21200	19000	14700
社融存量同比(%)	10.5	10.3	10.1	10.0	10.0	10.3	10.7	11.0	11.0	11.7
(当月同比变化)										
社会融资规模	9816	6490	4628	2247	-5667	-5960	-6176	2336	-12385	-12371
新增人民币贷款	3818	-1108	-2288	1089	-1416	-1488	-1830	4153	-1208	-3399
居民短贷	-2272	-985	-969	154	-175	-1348	-1425	100	-575	-1915
居民中长贷	-2024	-834	772	162	-1695	-1312	-2093	-1193	-236	529
企业短贷	1345	2042	224	540	552	1106	156	860	1855	2085
企业中长期贷款	1068	600	-2107	-2470	-1923	-3732	-2037	-1031	1019	10
委托贷款	-1199	3193	746	801	2284	3985	4489	2792	4854	-
信托贷款	366	337	143	66	1	295	582	1	10	-1
票据融资	-1351	162	67	-803	-186	-939	-1046	-204	-194	-9
其他信贷	-2302	171	-207	-241	-204	-1480	-1211	-1126	-1011	-37
政府债券发行	-1637	1882	1731	3188	-2	-179	990	733	241	-4048
其他	382	3589	4648	4158	1236	-2050	-4060	-3639	58	-420













# 2020

