



2209

2765 /

2595 /

7 /

0.25%

1

5 13

2180 -70 /

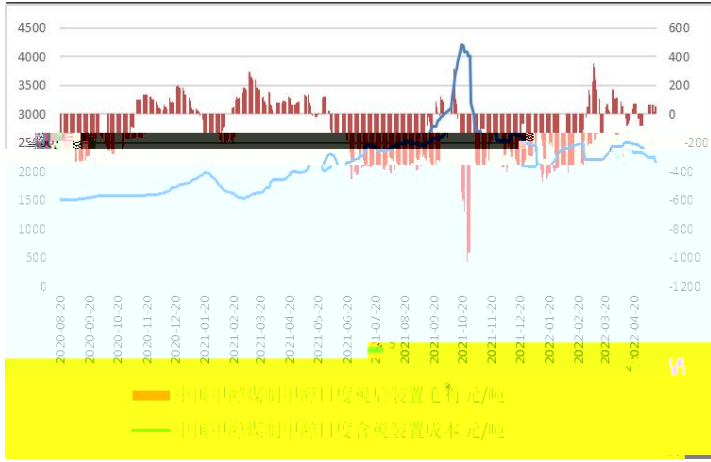
49

-13 /

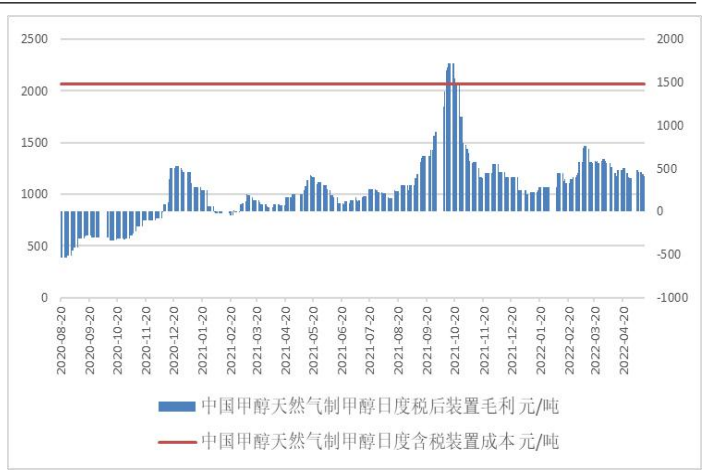
2070 0 /

412 +49 /

5



6

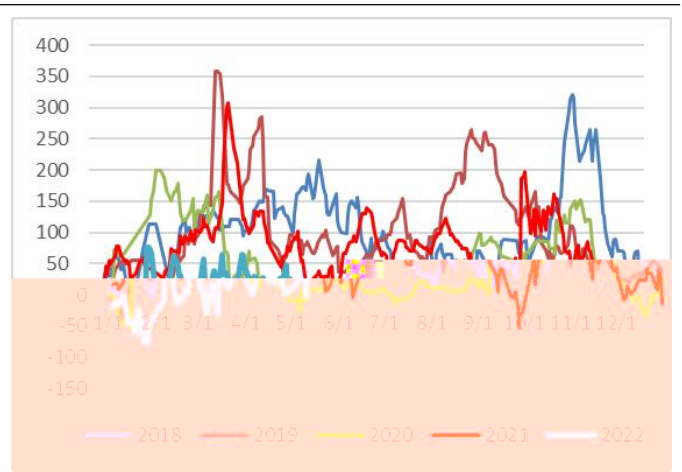


MBE

7

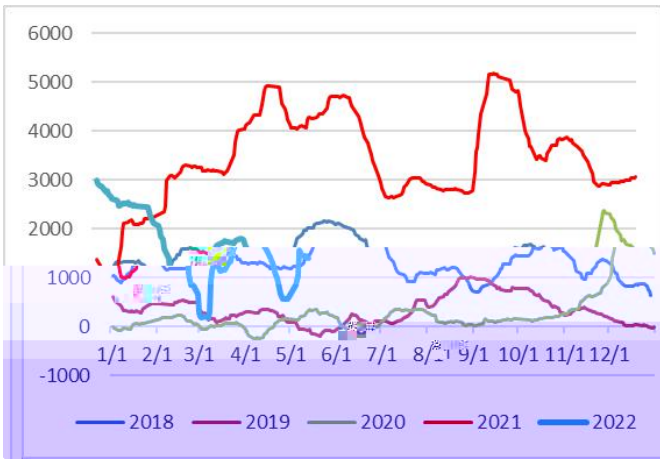


8



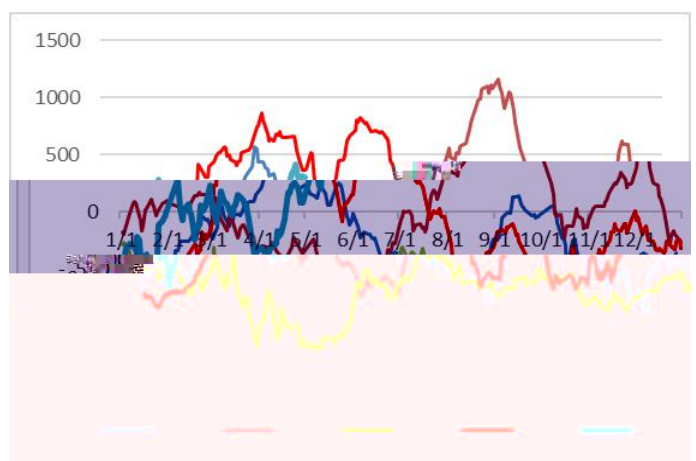
9

/



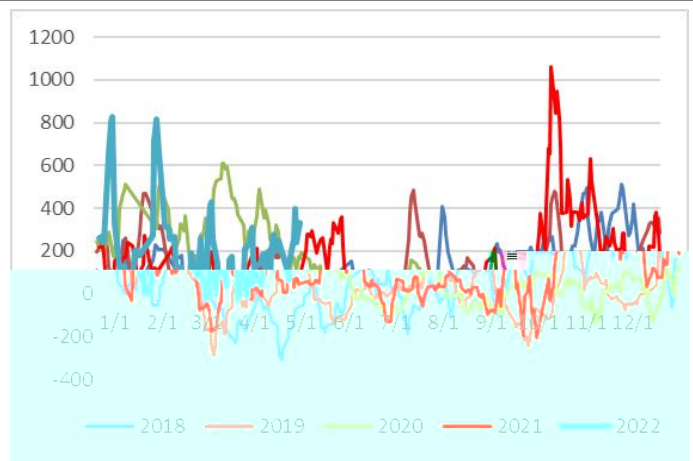
10 MBE

/



11

/



2

89.1 +0.1

9.5 -1.02

1678-2507

1.02

5 12

51.3 +4.9

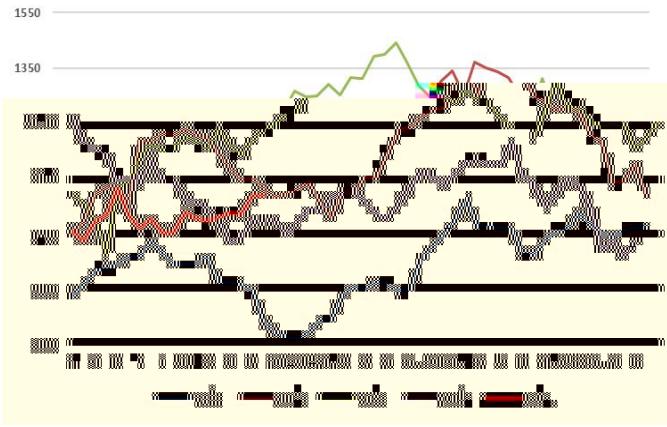
8.3 +2.27

5 12

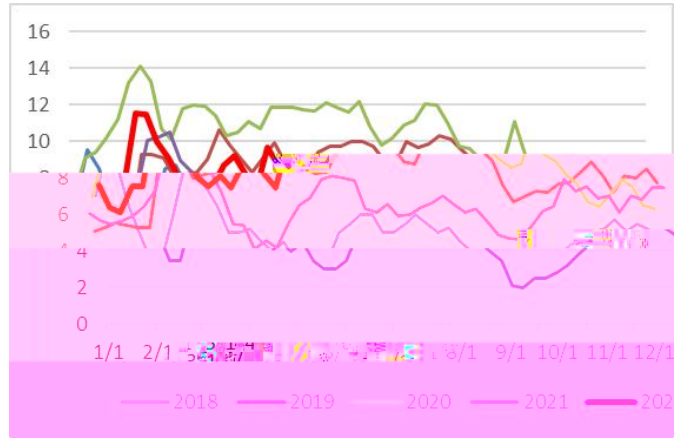
8.64

MTO

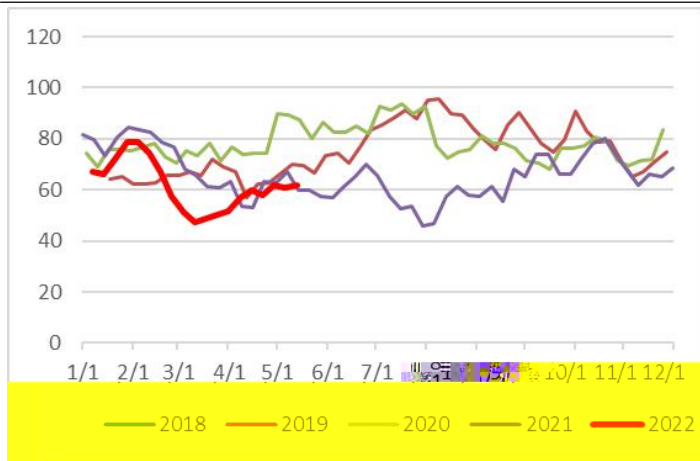
7



8



9 MO



3

5 12

74.77 -0.1 %

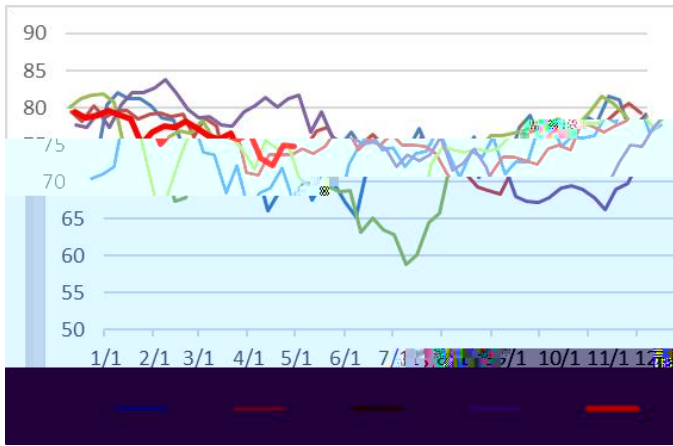
58.21 -3.23 %

54.79 -3.75 %

31.05

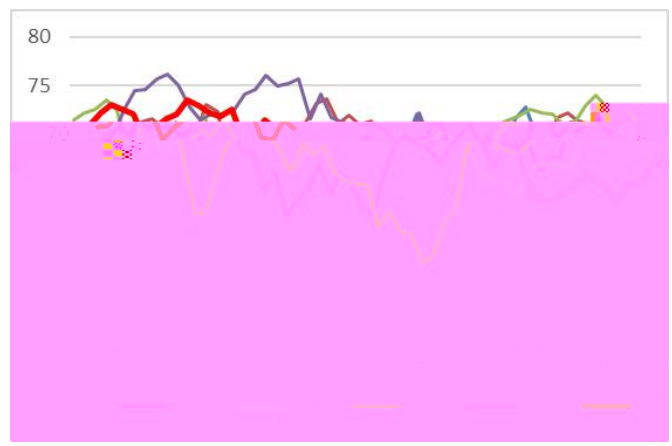
10

%



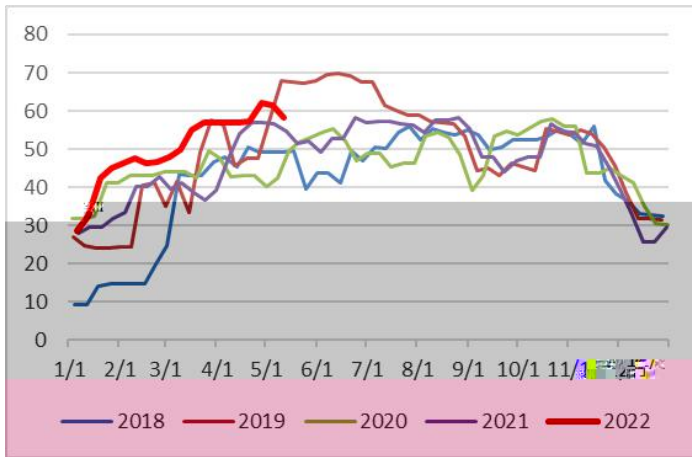
11

%



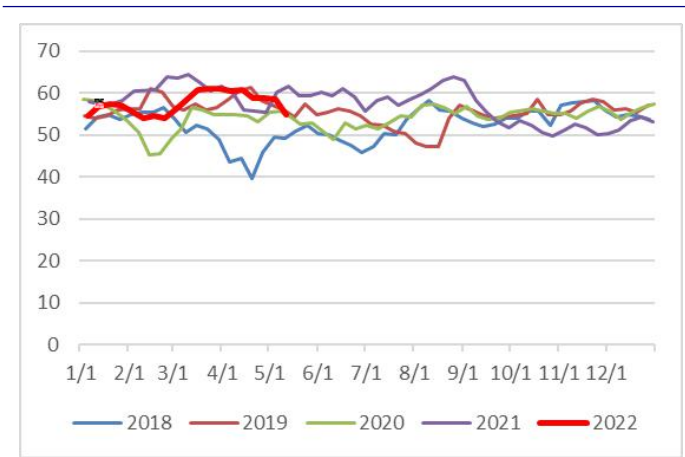
12

%



13

%



4

5 12

84.46 -1.31 %

32.93 +0.68 %

MBE

47.58 -0.51 %

73.97 -3.64 %

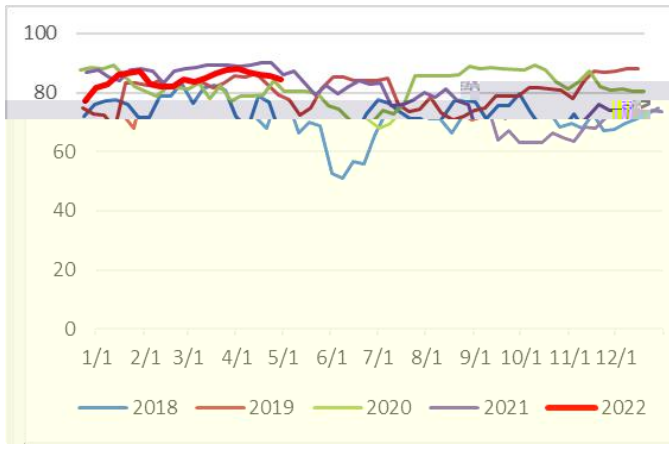
12.83 +0.20 %

DMF

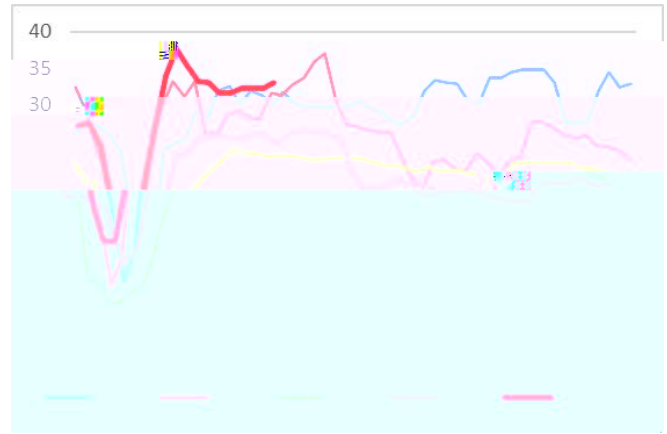
58.03 0 %

MTO

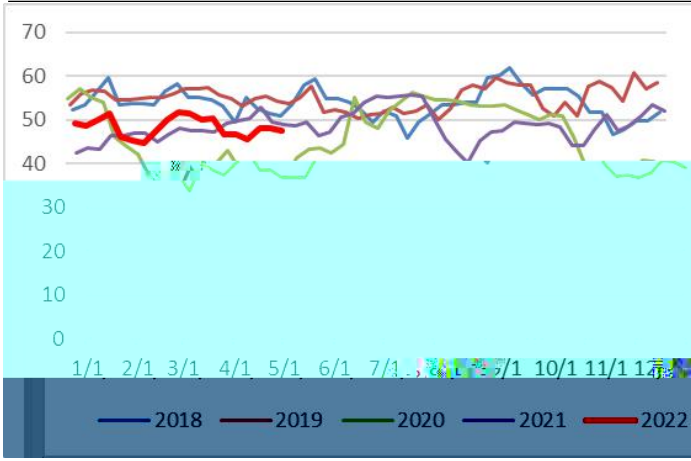
14



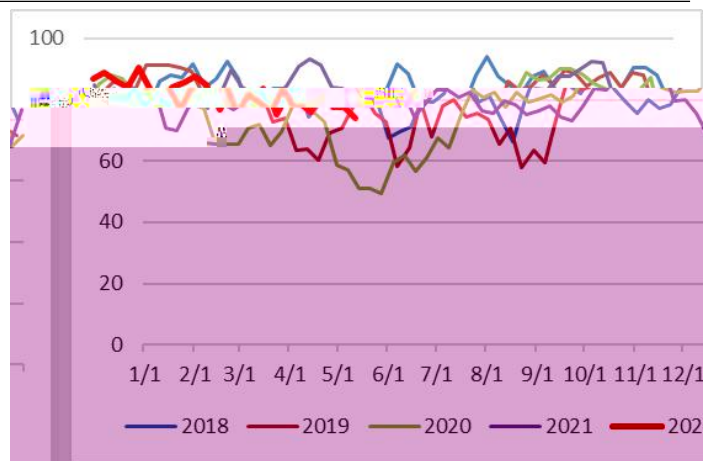
15



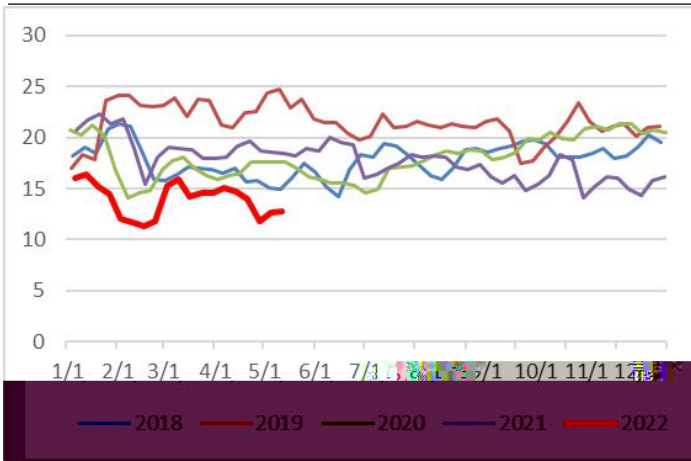
16 MBE



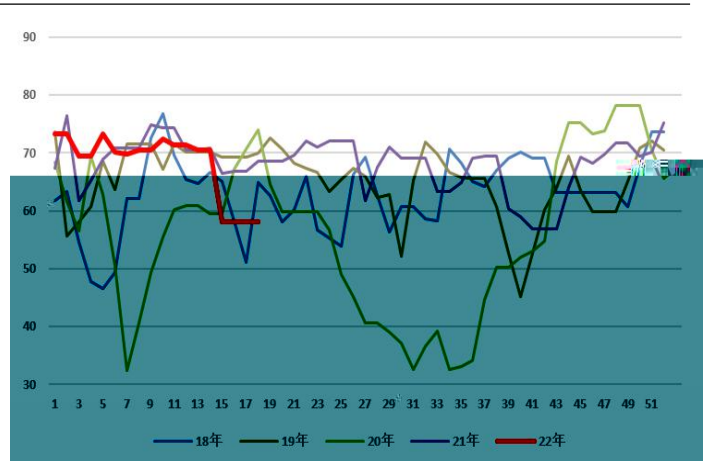
17



18



19 DMF



5

1

	120			1.5
	60		5 6 30	1.4
	12		4 5	0.21
	60		4 9	1.4
	40		5 7	0.4
	60		5 5	0.31
	20		5 8 10	1.5
	20		5 7 5 13	0.36
				7.08

2

	Tonsk	100	
	Bi oetnanol	2#95	
	Petronas	2#242	2# 2
	Lyondel I Basel I	93	
	Koch	170	

20%

120 /

20%

“ ”

“ ”