





1

9 9

2800 +70 /

-512 -62 /

2070 0 /

284 +13 /

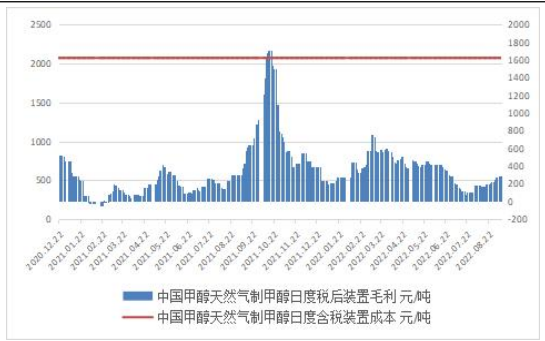
5

: /



6

/



PP/

MTO

CTO

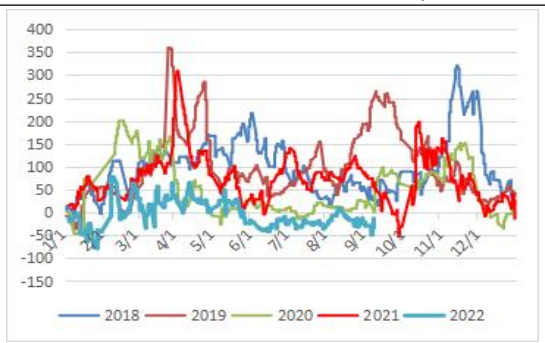
7

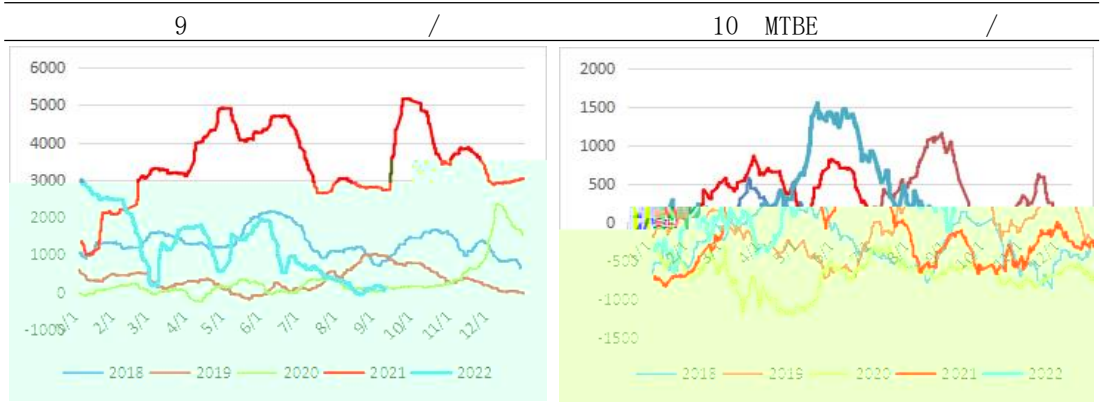
/



8

/

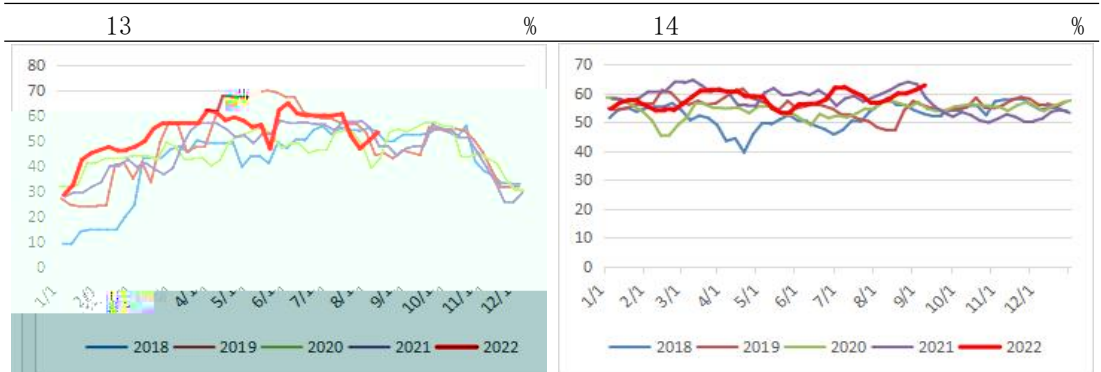
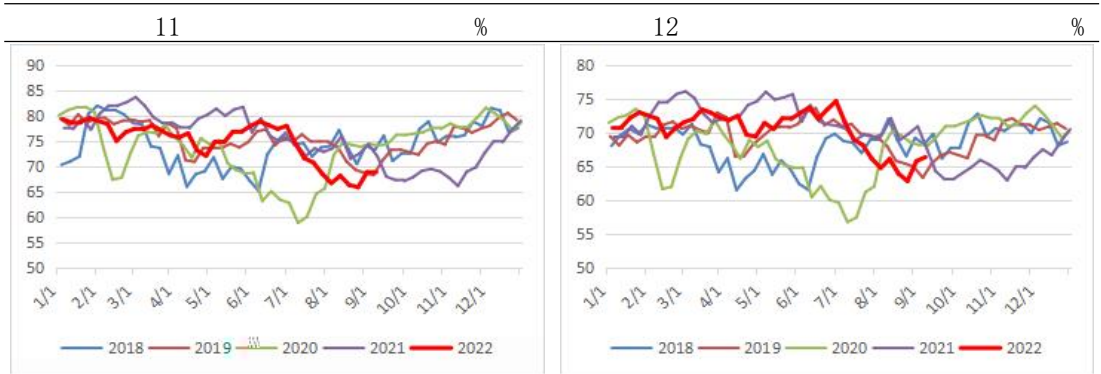




2                      9   9  
 53.41 +3.36 %

68.9 +0.02 %  
 62.73 +1.55 %

5                      4.22                      32.18



3	8	19		69.55	+0.1	%
	30.85	+0.23	%	12.00	+0.05	%
				MTBE		57.47
+0.16	%		83.20	+10.69	%	DMF
				67.90	+8.73	%

MTO CTO/MTO

MTO

MTBE

MTBE

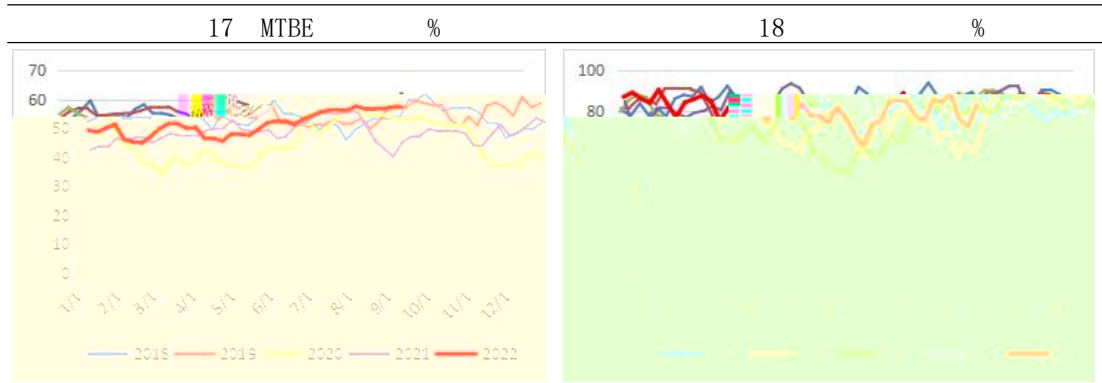
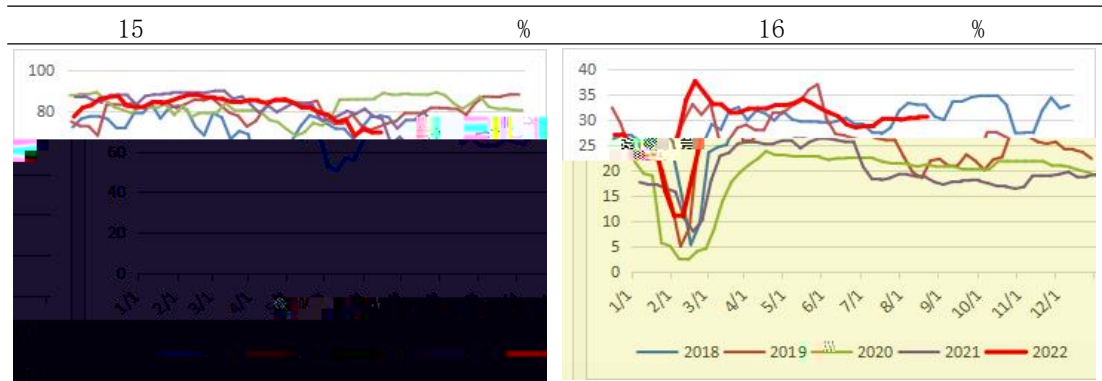
MTBE

MTBE

MTBE

MTBE

DMF



19 %	20 DMF %
------	----------



4

93.52 -4.5

9 9

53.7 -0.1

20.5 -0.6



0

5

1

	30			8	31	-9	12	0.7
	60			8	22			0.9
	30			8	2		9 15	0.56
	30			6	22			0.56
	67			8	25			1.5
								4.22

2

	Methane	130		
	Tomsk	100		
	Metafra	120		
	Petronas	2#242	2#	1#
	Bioetnanol	2#95		
	BMC	85		9-10
	Sabalan PC	165		

MTO

MTO

400-0988-278

<https://www.jin inqh.com/>