

Experts of financial
derivatives pricing

[2017] 1

F3074960

Z0017825

tangjianli@jinxinqh.com

OPEC+

10 14

77.56 +3.13 %

60.21 0 %

63.15 -0.89 %

2 0.77

10 14

82.63 +7.71 %

30.18 -0.09 %

12.27 -14.32 % MTBE

54.46 +0.16 %

77.29 -0.36 % DMF

75.77 -4.83 %

10 14

63.6 -9.6

36.9 -5.9

11.6 -2.5

10.16

-0.12

3.03 -1.72

65.14

+10.13



1

10 14

3080 0 /

-583 +93 /

2070 0 /

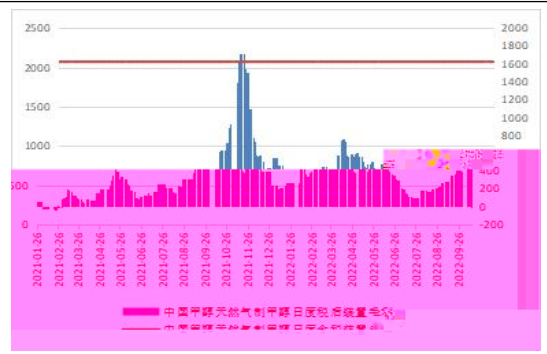
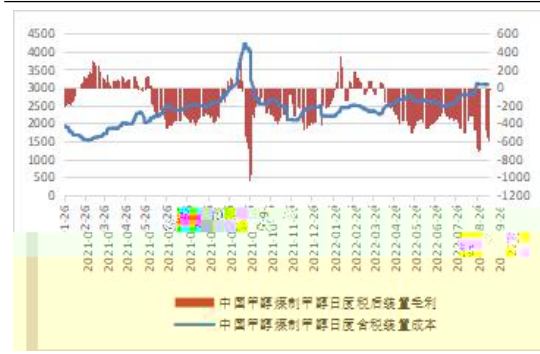
549 +154 /

5

: /

6

/



9

PP

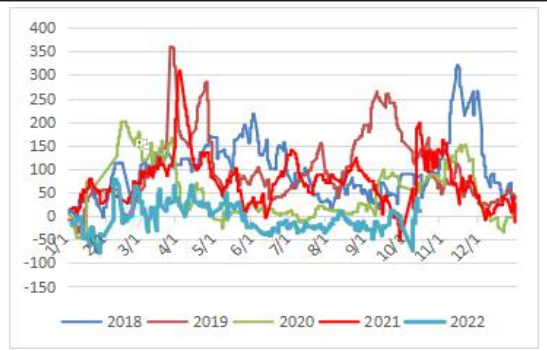
MO

7

/

8

/

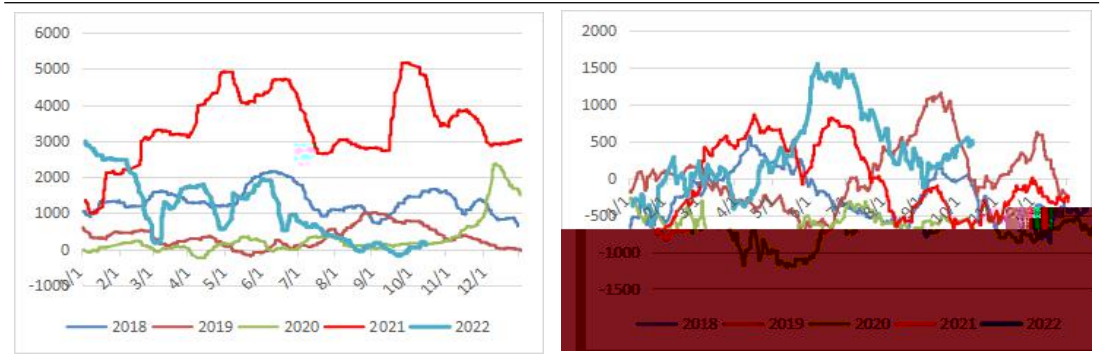


9

/

10 MBE

/



2 10 14

77.56 +3.13 %

60.21 0 %

63.15 -0.89 %

2 0.77

10 14 10 20

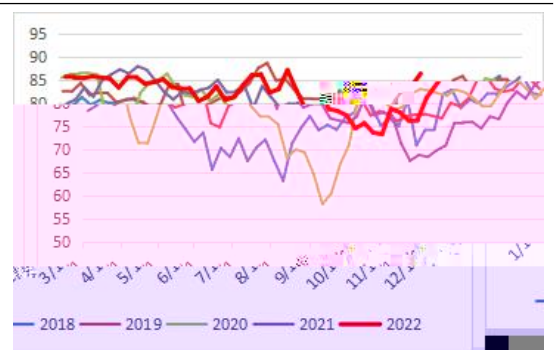
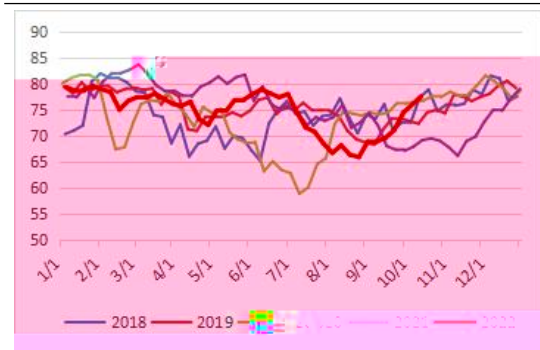
27.1-28

11

%

12

%

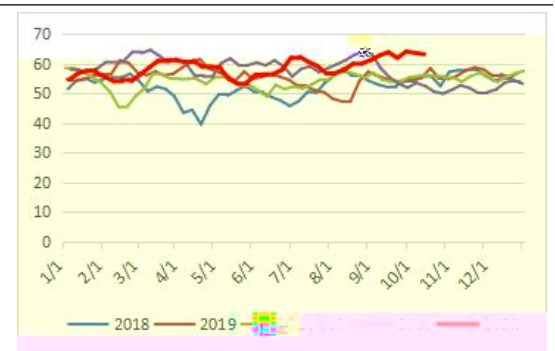
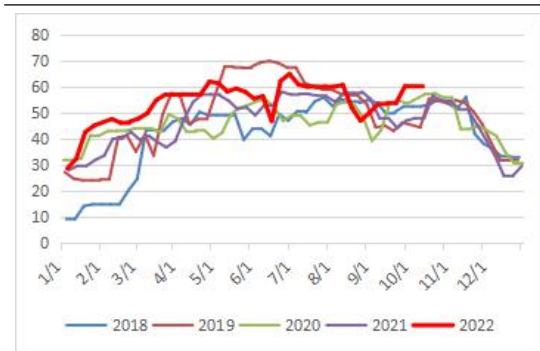


13

%

14

%



3	10	14		82.63
+7.71 %		30.18	-0.09 %	12.27 -14.32 %
MTBE	54.46	+0.16 %	77.29	-0.36 % DMF 75.77
-4.83 %				

				82.63%
9	29	7.71	MTO	645
		78.09%	9.59	

CTO/MTO

	30.18%	10	6	29.6%	0.58
	12.27%	10	6	12.88%	0.61

MTBE		54.62%	0.16
MTBE		52.33%	1.20
MTBE			

MTBE

MTBE

MTBE

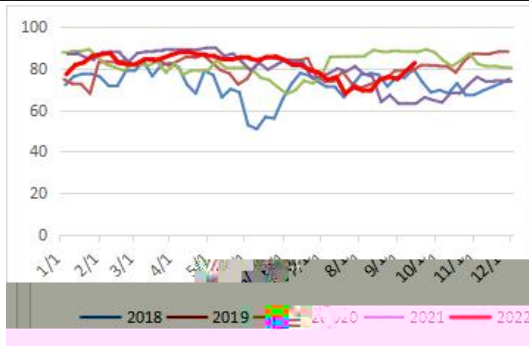
MTBE

77.29%	0.30
--------	------

DMF	75.77%	4.83	9
-----	--------	------	---

15

%



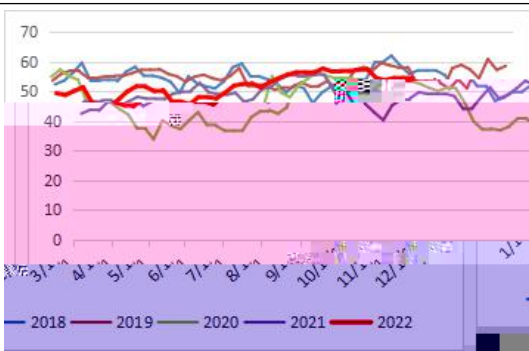
16

%



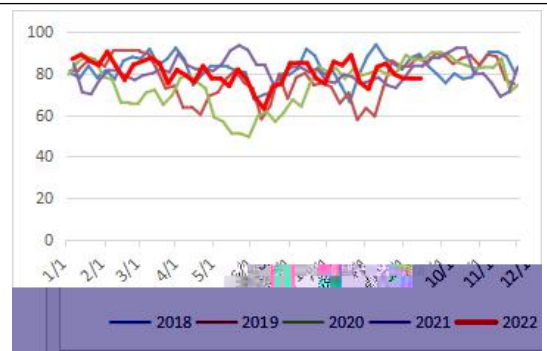
17 MBE

%



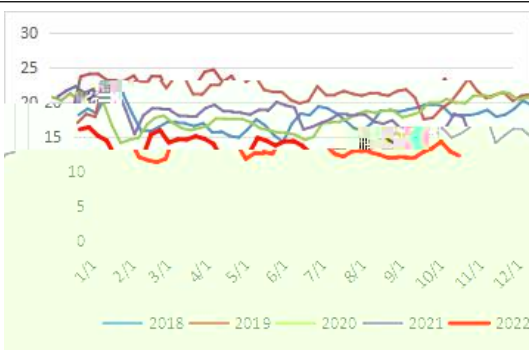
18

%



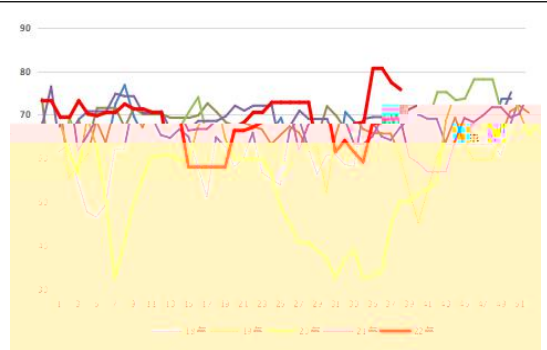
19

%



20 DMF

%



4

10 14

63.6 -9.6

36.9 -5.9

11.6 -2.5

10.16 -0.12

3.03 -1.72

1646-2692

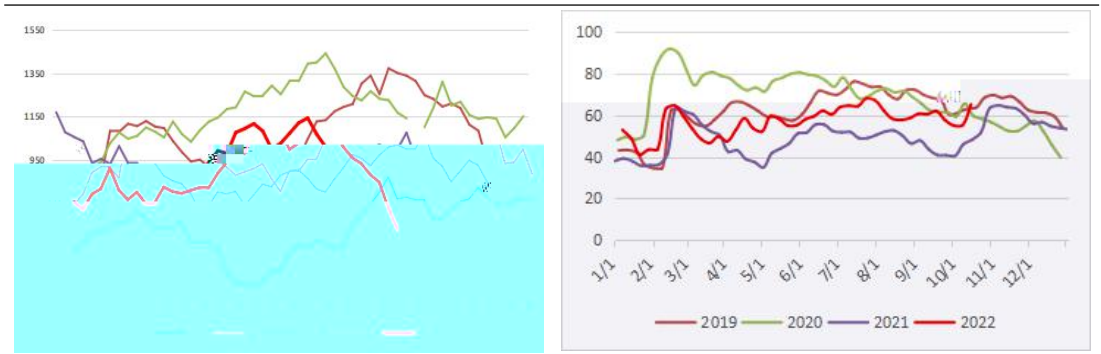
10 14

65.14 +10.13

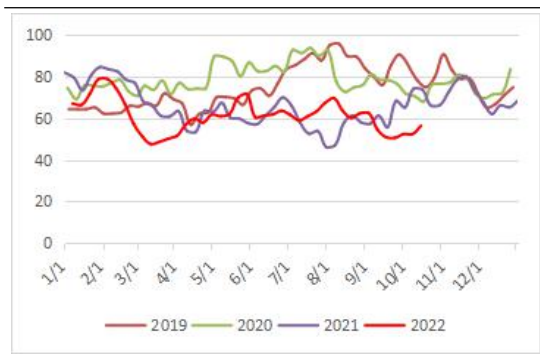
MO

21

22



23 MO



5

1

	20		9 22	0.21
	30		6 22	0.56
				0.77

2

	Methanex	220		
	Lyondel I basel 1	93		
	BMC	85		
	Sabal an PC	165		
	Bushehr	165		45
	Ki ni ya Pars	165		
	Sabal an PC	165		

MO

